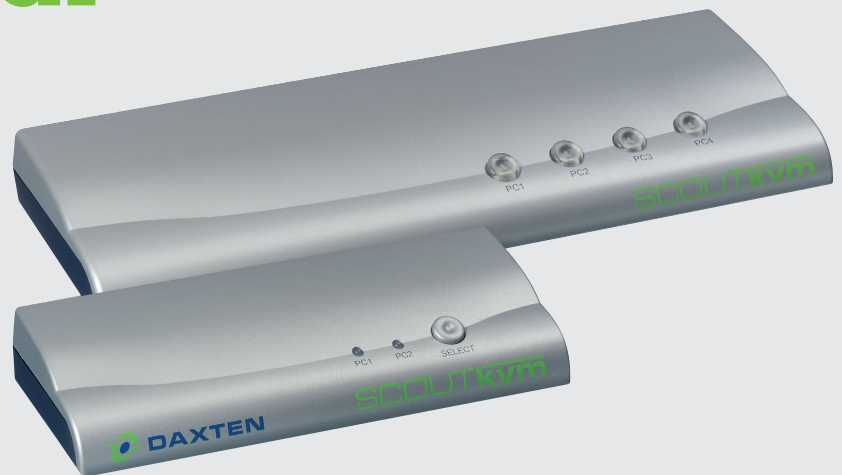


# Compact economical switching



**High quality and compact KVM switches, purpose designed for the home and small office environments. Control up to 4 PCs from a single keyboard, monitor and mouse. Minimising cost and reducing space.**

- ▶ Extremely compact and versatile KVM switches
- ▶ High quality video resolutions of 1920 x 1440 @ 85Hz
- ▶ Supports PS/2 and USB (with optional adaptor)
- ▶ Available in 2 and 4 port configurations
- ▶ All required kvm cables included
- ▶ Quick and easy installation

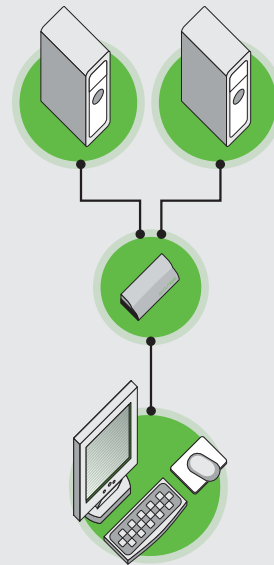
# KVM Server Management

## SCOUTkvm

The SCOUTkvm switches provide a solution to suit home and small/medium office environments.

Available in 2 and 4 port versions, SCOUTkvm switches provide efficient, economical switching for the multisystem user. These products reduce space and improve efficiency by allowing control of up to 4 PCs from a single keyboard, monitor and mouse. The SCOUT switches come with colour coded ports and cables making installation simple and intuitive. Units are hot-pluggable, require no software installation and come complete with all necessary cables (1.8 metres).

Where quality, space and price are a critical, the SCOUT range is the ideal choice.



### Technical specifications SCOUTkvm

- ▶ Dimensions (HxWxD):
  - SCOUTkvm 2 port: 25 x 157 x 60mm  
0.98 x 6.18 x 2.36 inches
  - SCOUTkvm 4 port: 25 x 242 x 78mm  
0.98 x 9.53 x 3.07 inches
- ▶ Resolution up to 1920 x 1440 @ 85 Hz, bandwidth 250 MHz
- ▶ Supports a mix of PCs using PS/2 and AT keyboards and PS/2 mice
- ▶ Supports PS/2 and wheel type mice
- ▶ Full keyboard and mouse emulation during boot-up and operation
- ▶ Programmable scan mode for automatic sequencing between PCs
- ▶ Operating system independent
- ▶ USB supported via adaptor
- ▶ No external power required
- ▶ Hot-key controls
- ▶ Simple to install and operate
- ▶ Units come with all necessary kvm cables

#### Daxten Ltd.

Bay 21  
Shannon Free Zone West  
County Clare  
Tel: 061 23 4000  
Fax: 061 23 4099  
info.ie@daxten.com

#### Part No.

1014-02 SCOUTkvm 2 port kvm switch  
1014-04 SCOUTkvm 4 port kvm switch  
2095-03 CPU cable 3m 10 feet  
2095-05 CPU cable 3m 16 feet