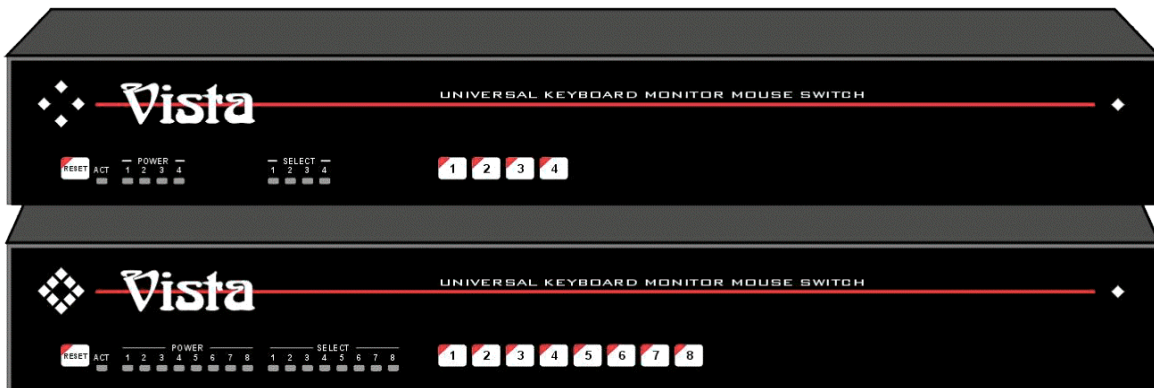




PERSONAL KEYBOARD-MONITOR-MOUSE SWITCH

INSTALLATION AND OPERATION MANUAL



1579 Lexington Road ■ Green Oaks, IL 60048
Phone: (847) 816-1337 ■ www.dakota-us.com

LIMITED WARRANTY

Dakota Computer Solutions warrants the Vista™ to be in good working order for one year from the date of purchase from Dakota Computer Solutions or an authorized dealer. Should this product fail to be in good working order at any time during this one-year warranty period, Dakota Computer Solutions will, at its option, repair or replace the Unit as set forth below. Repair parts and replacement units will be either reconditioned or new. All replaced parts become the property of Dakota Computer Solutions. This limited warranty does not include service to repair damage to the Unit resulting from accident, disaster, abuse, or unauthorized modification of the Unit, including static discharge and power surges.

Limited Warranty service may be obtained by delivering this unit during the one-year warranty period to Dakota Computer Solutions or an authorized repair center providing a proof of purchase date. You agree to insure the Unit or assume the risk of loss or damage in transit, to prepay shipping charges to the warranty service location, and to use the original shipping container or its equivalent. You must call for a return authorization number first. Under no circumstances will a unit be accepted without a return authorization number. Contact an authorized repair center or Dakota Computer Solutions for further information

ALL EXPRESS AND IMPLIED WARRANTIES FOR THIS PRODUCT INCLUDING THE WARRANTIES OF MERCHANTABILITY AND FITNESS FOR A PARTICULAR PURPOSE, ARE LIMITED IN DURATION TO A PERIOD OF ONE YEAR FROM THE DATE OF PURCHASE, AND NO WARRANTIES, WHETHER EXPRESS OR IMPLIED, WILL APPLY AFTER THIS PERIOD. SOME COUNTRIES DO NOT ALLOW LIMITATIONS ON HOW LONG AN IMPLIED WARRANTY LASTS, SO THE ABOVE LIMITATION MAY NOT APPLY TO YOU.

IF THIS PRODUCT IS NOT IN GOOD WORKING ORDER AS WARRANTED ABOVE, YOUR SOLE REMEDY SHALL BE REPLACEMENT OR REPAIR AS PROVIDED ABOVE. IN NO EVENT WILL DAKOTA COMPUTER SOLUTIONS BE LIABLE TO YOU FOR ANY DAMAGES INCLUDING ANY LOST PROFITS, LOST SAVINGS OR OTHER INCIDENTAL OR CONSEQUENTIAL DAMAGES ARISING OUT OF THE USE OF OR THE INABILITY TO USE SUCH PRODUCT, EVEN IF DAKOTA COMPUTER SOLUTIONS OR AN AUTHORIZED DEALER HAS BEEN ADVISED OF THE POSSIBILITY OF SUCH DAMAGES, OR FOR ANY CLAIM BY ANY OTHER PARTY.



NOTE: This equipment complies with the requirements of European EMC directive 89/336 EEC in respect of EN55022 Class B, EN 50082-1 and EN 60555-2.

This equipment has been found to comply with the limits for a Class A digital device, pursuant to Part 15 of the FCC Rules. These limits are designed to provide reasonable protection against harmful interference when the equipment is operated in a commercial environment. This equipment generates, uses, and can radiate radio frequency energy and, if not installed and used in accordance with the instruction manual, may cause harmful interference to radio communications. Operation of this equipment in a residential area is likely to cause harmful interference in which case the user will be required to correct the interference at his own expense.

© Copyright 2000. All rights reserved.

No part of this manual may be reproduced, stored in a retrieval system, or transcribed in any form or any means, electronic or mechanical, including photocopying and recording, without the prior written permission of Dakota Computer Solutions.

IBM® AT, and PS/2 are trademarks of International Business Machines Corp.
Microsoft®, Microsoft Windows™, Microsoft Intellimouse™ are registered trademarks of Microsoft Corp.
Multisync is a trademark of NEC Technologies, Inc.

INTRODUCTION

Thank you for choosing Vista™. Designed for *plug-and-play* operation, your new Vista switch simplifies your job by helping you organize your multiple computer applications. Because Vista lets you use a single keyboard, monitor, and mouse to access several computers, you can significantly reduce your equipment overhead and end keyboard and monitor clutter.

Features

- Access either 4 or 8 computers with one keyboard, monitor, and mouse
- Low cost and easy to use
- Saves physical space, equipment and power costs, reduces clutter
- Select computer from keyboard command or front panel
- Simple to use keystrokes switch computers for fast and easy control
- Use front panel to switch to any computer
- Front panel LEDs show computer, keyboard, and mouse status
- Uses computer's power - no external power required
- Monitor, keyboard, and mouse plug directly into unit
- Computer ports are DB25 connectors or PC-style connectors
- Scan mode automatically sequences through CPUs at adjustable rate
- Non-volatile memory stores configuration settings
- Heavy-duty steel, fully shielded chassis
- Rackmount option for 19", 23", or 24" racks
- Comes with a one-year warranty and unlimited technical support
- Made in USA

KEYBOARD AND MOUSE

- Full emulation of keyboard and mouse, computers can be booted at any time
- Support PS/2 mouse with or without wheel
- Simultaneously supports CPUs with either PS/2 (regular or wheel) or serial mouse
- Keyboard Num Lock, Caps Lock, and Scroll Lock states automatically saved and restored when switching among CPUs
- Keyboard mode automatically detected for simultaneous support of PCs, Unix computers, and IBM mode 1 computers

FRONT PANEL

- Switch to any computer from front panel
- Front panel LEDs show which computer is selected and powered on
- Activity LED shows CPU power-on and keyboard and mouse data
- Reset switch reinitializes all devices

VIDEO

- Video resolution supports up to 1600 x 1280 non-interlaced video
- Uses amplifiers for crystal clear video and increased distance

GETTING STARTED

To acquaint you with your Vista unit, this manual first describes Vista's front and rear panels. Then follow the installation on page 8, which is a simple step by step description of plugging the cables in and accessing the computers.

Vista models

This manual describes several different models of Vista, see *Table 1* below. The features and commands are similar for the different models. Please disregard the diagrams and text that do not apply to your model. The models available are:

<i>Model</i>	<i>Computers</i>	<i>On-Screen Display</i>
1017-08	8 PCs	No
1018-04	4 PCs	Yes
1018-08	8 PCs	Yes

Table 1. Standard Vista Models

Package contents

Your Vista package includes the Vista unit, this manual, and a power supply with some models.

Locating the unit

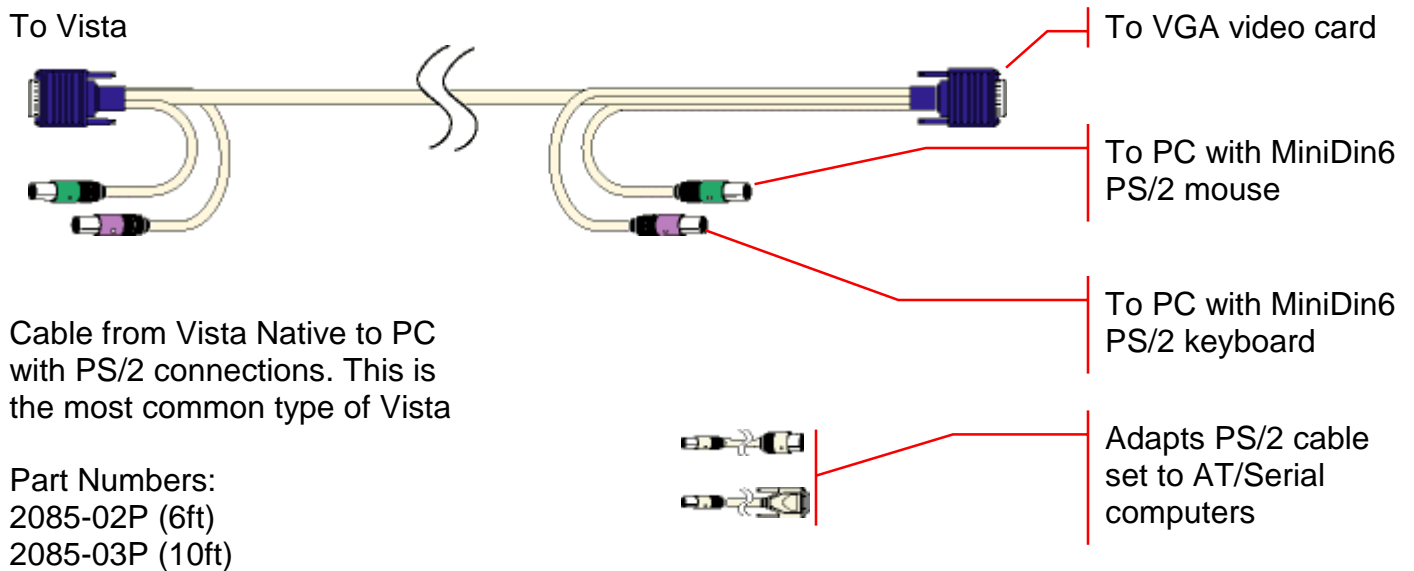
The Vista unit is best located as close to the CPUs as possible. This will reduce the length of the CPU cables and provide a more cost-effective and neater installation. Vista can also be used with the optional rackmount kit. While usage of Vista is trouble-free and transparent and need not be in an accessible location, you may wish to access the front panel in order to see the activity, power, or select LEDs or to switch to a computer from the front panel switches.

Cable requirements

Vista connects to each computer with various cables, depending on which model and computer type, see *Figure 1* on the next page for the different cable types. You plug the keyboard, monitor, and mouse directly into Vista. The cables are most commonly purchased with Vista and will provide quick and trouble-free operation.

Most installations use cable no longer than 20 feet in length. Cable length will affect the quality of the video, depending upon which resolution you will be using. You can improve the video resolution and distance by ordering coax cables, see *Figure 1* and *Appendix C* for the part number of the cable.

Cables for use with Vista Native



Cables for use with special models that have DB25 connectors

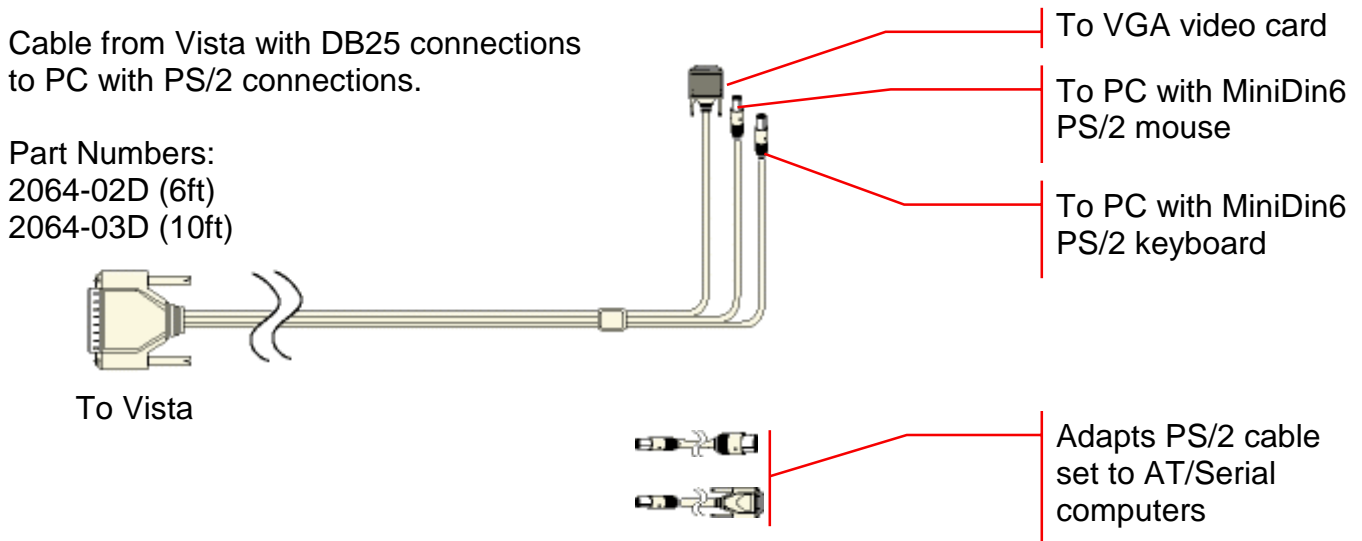


Figure 1. Vista Cables

The front panel

The Vista front panel features five switches and nine LED indicators (4 port model) or nine switches and seventeen LED indicators (8 port model). To familiarize yourself with Vista's controls and indicators, review the illustration and descriptions given below.



Figure 2. Vista 4 port front panel, model 1018-04



Figure 3. Vista 8 port front panel, model 1017-08, 1018-08

Table 2. The front panel

ACT ACTIVITY LED	The activity LED is lit when the currently selected CPU has power applied to it. It will flash as keyboard and mouse data is sent to the unit. Since power from Vista comes from the computers, you must have at least one computer connected.
POWER LEDS 1-4 or 1-8	Indicates which computers are powered on.
SELECT LEDS 1-4 OR 1-8	Indicates which computer is currently selected
RESET SWITCH	Resets the unit and initializes the keyboard and mouse, also used to reset the unit to factory default settings.
SWITCH 1-4 or 4-8	Selects the computer to connect to the keyboard, mouse and monitor

The rear panel, models 1018-04, 1017-08, 1018-08










Figure 4. Vista rear panel, Model 1018-04



Figure 5. Vista rear panel, model 1017-08, 1018-08

Table 3. The rear panel, models 1017-08, 1018-04, 1018-08

Panel Label	Connector	Description
<ol style="list-style-type: none"> 1  2  3  4  	HD15 female Mini-din-6 female Mini-din-6 female	This is where you plug in your computers using straight-through male to male cables. Use adapter 2085-00S to convert from mini-din6 to din-5 and mini-din6 to DB9 serial.
 VGA Monitor	HD15 female	Connect the VGA monitor directly to this connector.
 PS/2 Mouse	Mini-din-6 female	Connect the PS/2 mouse directly to this connector.
 PS/2 Keyboard	Mini-din-6 female	Connect the PS/2 keyboard directly to this connector.

INSTALLATION

Step 1. Connecting the monitor, keyboard, and mouse

- 1.1 Plug the monitor, keyboard, and mouse cables from your controlling keyboard, monitor and mouse directly into the unit.

Step 2. Connecting the CPUs

CPU cables connect your computers to the Vista. Each computer requires its own cables, with appropriate connectors for your particular CPU. CPU cables are available from your Dakota dealer or directly from Dakota Computer Solutions. Refer to *Figure 1* on page 3 for selecting the proper cable.

For Vista Native models with PC connectors:

- 2.1 Plug the HD15 male-male cable from the video card into one of the numbered HD15 female connectors on the Vista rear panel.
- 2.2 Plug the mini-din-6 male-male cable from the computer keyboard port into one of one of the numbered mini-din-6 female connectors with a keyboard symbol on the Vista rear panel. If your computer has a din-5 keyboard port use the mini-din-6 female to din-5 male adapter. Be sure you are keeping the keyboard, mouse and monitor connections for each computer on the same port. Ensure that you do not mix up the keyboard and mouse cables, as they can look identical at first glance. Using Dakota brand color-coded cable sets with single jacket design eliminates this issue.
- 2.3 Plug the mini-din-6 male-male cable from the computer mouse port into one of one of the numbered mini-din-6 female connectors with a mouse symbol on the Vista rear panel. If your computer is configured to use a serial port for the mouse, use the mini-din-6 female to DB9 female adapter, code 2085-00S.

Warning: Do not substitute with a non-Dakota mouse adapter. There is a difference. Damage may occur if you use a third-party adapter!

For Vista special models with DB25 connectors:

- 2.1 Plug the DB25 male connector of the CPU adapter cable into one of the numbered CPU ports on the Vista rear panel.
- 2.2 Plug the CPU adapter cable's monitor, keyboard, and mouse connectors into the CPU's corresponding ports.

WARNING: Avoid routing cable near fluorescent lights, air conditioning compressors, or machines that may create electrical noise. For best quality video, use triple shielded coax (high-resolution) cable. Read *Appendix A, B, and C* for further cable information.

Step 3. Powering up the system

3.1 Boot up each of the connected CPUs. Vista emulates all keyboard and mouse functions for automatic boot-up. You do not have to re-boot the CPU, if it is inconvenient. In this case you may need to issue the mode command, see page 9, to have proper keyboard communication.

Step 4. Switching from the keyboard

Your Vista is now ready for operation using its default settings. Pressing the numbered switch on the front panel will switch to that computer. To take full advantage of the Vista features, refer to the *Operation* section beginning on page 8. The *Operation* section gives detailed information about each of the Vista commands, describing its application and giving the keyboard command sequence. For your convenience, this information is summarized in the *Keyboard command summary* on page 13. To begin switching immediately from the keyboard follow the instructions below.

4.1 Press and release your keyboard's **left** Control Key (**<Ctrl>**), then type in the computer number 1-8.

NOTE: Before entering any Vista keyboard command, you must press and release the **left** Control Key. This instructs Vista to look for valid commands from the keyboard. You then have two seconds in which to start entering a valid command before the command mode is released.

NOTE: When entering numeric commands, use only the numeral keys located at the top of your alphanumeric keyboard. Numbers entered from the numeric keypad to the right will **not** be recognized as valid commands.

OPERATION

Vista is simple to operate. Computer selection and function commands are entered from the keyboard. You can also select computers manually from the Vista's front panel by using buttons **1-8**. This section details each Vista function.

IMPORTANT OPERATION NOTE: To send Vista keyboard commands, you must first press and release the **left** Control Key (**<Ctrl>**). Pressing and releasing **<Ctrl>** instructs Vista to look for valid commands from the keyboard. You have two seconds between each keystroke to enter a valid command; otherwise Vista aborts the command.

NOTE: When entering numeric commands, use only the numeric keys located at the top of your keyboard. Numbers entered from the numeric keypad to the right will **not** be recognized as valid commands.

NOTE: Vista commands ignore case. All command letters are shown capitalized for clarity in print only.

Keyboard computer selection

To select a computer from your keyboard, press and release your keyboard's **left** Control Key **<Ctrl>**, then type in the computer number. Remember to use the numbers located at the top of your keyboard. **Do not** use the numeric keypad.

Going to the next or previous computer

From the keyboard you can toggle forward or backward through the computers by selecting either the Next or Previous computer. To go to the Next computer, press and release the **left** Control Key **<Ctrl>**, then press the "+/= " (plus) key. To go to the Previous computer, press and release **<Ctrl>**, then press the (minus) key. The command is not case sensitive. Use the keys at the top of your keyboard, not those on the numeric pad.

Scan mode commands

To enable scanning from the keyboard, press and release the **left** Control Key **<Ctrl>**, then type **"S"**. Vista will begin scanning sequentially from its current computer through the remaining computers (as set by the maximum computers command, page 10), then begin again at computer 1. The time between switching to the next computer is the scan time interval and is programmable from 1-15 seconds. To stop scanning, press and release **<Ctrl>**, then type **"X"**. Entering a computer selection command also disables scanning. The power-on state of scanning can be saved in nonvolatile memory. To do this, set the scan state and follow with the Keep command.

Scan time interval command

The scan time interval command sets the time, in seconds, that Vista will pause at each of the computers when scanning. The default setting is 5 seconds. To set another interval, press and release the **left** Control Key, type "**T**", enter the new scan time interval (in seconds), and press **<Enter>**. Remember to use the upper numeric keys, not the numeric keypad to the right. Follow with the Keep command to save the setting.

Mode command

Vista supports PC keyboard modes 1, 2, and 3. The keyboard mode is set by commands from the CPU. Mode 2 is the most common mode used by the vast majority of CPUs. It is also the power-up state of all PC keyboards. Mode 1 is used primarily by certain models of IBM PS/2 computers. Mode 3 is used by Unix computers such as R/S 6000, HP 9000, SGI, DEC Alpha, and others.

Vista automatically detects each PC's keyboard mode upon CPU boot-up, and thus learns which CPU uses which mode. If the CPU has already booted and is then connected, Vista cannot detect the CPU's keyboard mode and uses the setting stored in the Vista's non-volatile memory. The mode command can be issued to change the keyboard mode for each computer and can be saved in non-volatile memory with the Keep command.

To issue the Mode command, press and release the **left** Control Key, type "**M**", and enter the mode number "**1**", "**2**", or "**3**", followed by **<Enter>**. Remember to use the alphanumeric keys, not the numeric keypad, to enter the mode number. Follow with the Keep command. The mode is changed on your currently selected computer. To change the mode on another computer, you must first switch to that computer and then issue the mode command.

Typematic value command

The typematic setting is used to adjust the user preference of the way the keyboard acts when holding a key down to repeat the key, such as when moving a cursor across a line. The rate is the speed at which the keys are sent in keys/second. The delay is the wait time in milliseconds after the key is initially pressed, before additional keystrokes are sent. To issue the command press and release the **left** Control key, then type "**A**", then enter the 1-3 digit decimal *typematic value* followed by **<Enter>**. The *typematic value* is defined below. Use the keep command to save the value.

The *typematic value* to be used is determined from the following tables using the equation: **Typematic Value = Rate value + Delay Value**. Pick the desired rate in keys/sec. (32 choices) and delay in milliseconds (4 choices) from the tables below. Add the values to the right of the desired settings. For example to use a Rate of 16.0 keys/sec. and a 500 millisecond delay, the typematic value = 7 + 32 = 39, so to set this value, type **<Ctrl> A 39 <Enter>**.

Table 4. Typematic rate							
Rate Keys/sec	Rate Value	Rate Keys/sec	Rate Value	Rate Keys/sec	Rate Value	Rate Keys/sec	Rate Value
30.0	0	15.0	8	7.5	16	3.7	24
26.7	1	13.3	9	6.7	17	3.3	25
24.0	2	12.0	10	6.0	18	3.0	26
21.8	3	10.9	11	5.5	19	2.7	27
20.0	4	10.0	12	5.0	20	2.5	28
18.5	5	9.2	13	4.6	21	2.3	29
17.1	6	8.6	14	4.3	22	2.1	30
16.0	7	8.0	15	4.0	23	2.0	31

Table 5. Typematic delay							
Delay in millisec.	Delay value	Delay in millisec.	Delay value	Delay in millisec.	Delay value	Delay in millisec.	Delay value
250	0	500	32	750	64	1000	96

Maximum computers command

This command tells the Vista system the total number of computers connected. It is used so that computer scanning can bypass unused ports on the unit. For example with an eight-port unit if no computers were connected to ports 7 and 8 you could scan computers 1-6 and bypass 7 and 8. To issue the command press and release the **left** Control Key, type "**P**", enter the total number of computers, and press **<Enter>**. Follow with the Keep command to save the new setting in the unit's non-volatile memory.

PS/2 to serial mouse translation, wheel mouse

You can use some computers with PS/2 mouse interfaces and some computers with serial interfaces. You must issue this command on each computer, which is serial. You must switch to each computer and issue the command.

To configure a computer for a serial mouse, press and release the **left** Control Key, type "**Q1**", and press **<Enter>**. Follow with the Keep command to save the new setting in the unit's non-volatile memory. To restore a computer which was previously set to serial to regular PS/2 use Q0 instead of Q1.

Whether a computer uses a PS/2 wheel mouse or a regular PS/2 mouse is learned by Vista when the computer loads its mouse driver. This will override any previous setting. You can tell Vista to change its PS/2 communication to regular or wheel with the Q command. You can also save it to non-volatile memory.

To configure a computer for a wheel mouse, press and release the **left** Control Key, type "**Q2**", and press **<Enter>**. Follow with the Keep command to save the new setting in the unit's non-volatile memory. To restore a computer which was previously set to wheel mouse to regular PS/2 use Q0 instead of Q2.

Null command

This command is used to re-synchronize an out-of-sync PS/2 mouse. Such a condition can result due to transients, spurious power-up effects, or plugging and unplugging of cables with live equipment. The command may need to be entered once or twice, depending if the mouse is out-of-sync by one or two bytes. Microsoft mouse driver version 9.01 or later corrects this inadequacy of previous drivers and renders this command unnecessary. To issue the command, press and release the **left** Control Key, then type "**N**".

Keep command

The Keep command saves the current state of the Vista's custom settings. These settings are scan enable, scan interval, each CPU's mode and keyboard LED state, maximum computers, the keyboard typematic value, and the mouse translation for each CPU. These settings are saved in non-volatile memory and become the power-up settings. To enter the command, press and release the **left** Control Key, then type "**K**".

ROM Identification command

This command is used to identify the revision level of Vista firmware currently installed. Before entering this command, your currently selected CPU should be at a command prompt, word processor, or editor, so that when Vista sends the ROM revision level that the result will be displayed. To issue the command, press and release the **left** Control Key, then type "**I**". Vista will send back its current firmware revision level, in the format *majorversion.minorversion*.

Reset command

This command is used to re-boot the mouse and keyboard without removing power from Vista. This is most useful to reset a PS/2 mouse that has been unplugged and plugged back in. This command is also useful to enable mouse data to be sent to a CPU that has not enabled the mouse. This may be the case if Vista was not connected or powered off after a CPU was booted up. To issue the command, press and release the **left** Control Key, then type "**R**". This command should not be issued to a CPU which has a PS/2 mouse connected, but no mouse driver is loaded, since many CPUs will crash if you send them unexpected mouse data.

Immediately upon issuing the command, you will see the keyboard LEDs all go on and then resume their previous state.

Reset computer mouse command

This command sends a mouse-reset command to the currently selected computer. Don't confuse this command with the reset command, which resets the mouse itself. This command can be used to recover a stuck mouse on NT and Windows 95/98. To issue the command, press and release the **left** Control Key, then type "O".

Do not use this on older computers that can not recover the mouse by plugging a mouse in directly, as it will make the mouse go out of sync.

Reset to factory default

The settings that have been previously set and saved in non-volatile memory can be returned to their factory default settings. This can be useful when the unit is being moved to a new installation or to put the settings into a known condition for troubleshooting. To perform this operation, hold in the "1" and the "2" membrane buttons on the front panel and press and release the "reset" button. At least one CPU must be correctly connected to the unit, so that the unit can be powered. The activity LED will flash three times to signify that the non-volatile memory has been returned to the original factory default settings listed in Appendix C.

Rackmount kit

The rackmount kit is an optional item that can be ordered at any time. Your Vista unit is designed to accept the rack-mount mounting brackets. There are three sizes available 19" by 1.75", 23" by 1.75", and 24" by 1.75". The most common rack style is 19".

KEYBOARD COMMAND SUMMARY

To enter any keyboard command, first press and release the **left** Control Key, represented by **<Ctrl>**. Then enter the command followed by any parameters you wish to specify. The number of the port you wish to switch to is an example of a valid parameter.

Letter commands are not case sensitive, and are shown in upper case for clarity only. **Do not** use the shift key in the command.

Do not use the numeric keypad to enter any commands.

All Vista commands use a two-second time-out between key presses. The command and command mode will expire and reset to normal keyboard function after two seconds. This feature ensures that the keyboard command mode of the Vista does not interfere with normal keyboard operation.

The **<Ctrl>** character is always passed through to the CPU. The valid command characters and command operands, however, are absorbed by Vista and not sent to the CPU when the vista is in command mode.

Figure 6. Keyboard command summary

Command	Key Sequence	Description
Port Selection	<Ctrl> <i>n</i> where <i>n</i> = 1, 2, 3, 4, 5, 6, 7, or 8	Connects your common keyboard, monitor, and mouse to the selected computer.
Connect to next computer	<Ctrl> +	Selects the next sequential computer.
Connect to previous computer	<Ctrl> -	Selects the previous sequential computer.
Scan On	<Ctrl> S	Turns Scan mode on, causing Vista to start scanning sequentially from the current port through the remaining ports and beginning again at Port 1.
Scan Off	<Ctrl> X	Turns Scan mode off. Note: Scan can also be stopped by entering a Port Selection command.
Reset command	<Ctrl> R	Resets and enables mouse and keyboard, enables PS/2 mouse on currently selected port.
Reset CPU-side mouse command	<Ctrl> O	Sends reset mouse command to currently selected computer. Will recover a stuck mouse on NT.
Send null to mouse	<Ctrl> N	Used to re-synchronize PS/2 mouse which has gotten out-of-sync.

Identify ROM version	<Ctrl> I	Identifies ROM version, CPU must be at some sort of command prompt to receive value.
Keep settings	<Ctrl> K	Tells Vista to save current scan state and custom settings of commands shown below.
Scan time interval	<Ctrl> T <i>nn</i> <Enter> where <i>nn</i> = time in seconds from 1-15 seconds	Sets the time, in seconds, that Vista will pause at each port when scanning. Note: Follow with Keep command.
Set keyboard mode and computer type	Select port, then enter command: <Ctrl> M <i>n</i> <Enter> where <i>n</i> = 1, 2, or 3	Sets PC's keyboard mode. Must be done for each computer where specific keyboard/PC types are required. See Keyboard Modes on page 9 for a full description. Note: Follow with Keep command.
Set maximum ports	<Ctrl> P <i>n</i> <Enter> where <i>n</i> = a single digit number signifying total number of ports	Sets the total number of ports to be used. Limits scanning to this number of ports. Note: Follow with Keep command.
Set typematic value	<Ctrl> A <i>nnn</i> <Enter> where <i>nnn</i> = a 1-3 digit number from 0 to 127 indicating KB typematic value	Sets power-on keyboard typematic action, which is controlled by Vista. This can be used to adjust the keystroke rate and delay to the user preferred setting. See <i>Table 4</i> and <i>Table 5</i> for how the typematic value is determined. Note: Follow with Keep command.
Set PC mouse type	Select port, then enter command: <Ctrl> Q <i>n</i> <Enter> where <i>n</i> = 0 (regular PS/2 mouse) 1 (serial mouse) 2 (PS/2 wheel mouse)	Enable/disable PS/2 to serial mouse or PS/2 to PS/2 Wheel mouse translation. Must be done for each computer where translation is desired by switching to it and issuing the command. Note: Follow with Keep command.

APPENDIX A. FACTORY DEFAULT SETTINGS

Settings	Default
Scan enable	Off
Scan Time Interval	5 seconds
Caps/Numlock/Scroll	Numlock On
PC keyboard Mode	2
Typematic Value	43 (Rate=10.9 chars/sec, delay=500millisec.)
Mouse translation	0 (PS/2 mouse output)

APPENDIX B. GENERAL SPECIFICATIONS

SIZE	13.2"W x 1.75" x 4.5"D
WEIGHT	3 lb.
ENVIRONMENT	0 to 55°C., 0% to 80% non-condensing relative humidity
INPUT POWER	Supplied by keyboard port on computers or 110V/220V auto switching DC9V converter on OSD models
CPU CONNECTORS	HD15F/MiniDin6F/MiniDin6F
VIDEO CONNECTOR	HD15 female VGA-style video
KEYBOARD CONNECTOR	MiniDin6 female
PS/2 MOUSE CONNECTOR	MiniDin6 female
CHASSIS	Fully shielded, black painted steel with polyester front panel overlay
CONTROLS	Reset switch Computer select membrane switches: 4 port models membrane button 1-4 8 port models membrane button 1-8
INDICATORS	Activity LED Power LEDs: 4 port models LEDs 1-4 8 port models LEDs 1-8 Computer select LEDs: 4 port models LEDs 1-4 8 port models LEDs 1-8

APPENDIX C. CABLES AND ACCESSORIES

Description	Part Number
CPU cables for models with PC connectors	
High Resolution Combination cable HD15/MiniDin6/MiniDin6 M-M 6ft	2085-02P
High Resolution Combination cable HD15/MiniDin6/MiniDin6 M-M 10ft	2085-03P
High Resolution Combination cable HD15/MiniDin6/MiniDin6 M-M 15ft	2085-05P
High Resolution Combination cable HD15/MiniDin6/MiniDin6 M-M 25ft	2085-07P
High Resolution Combination cable HD15/MiniDin6/MiniDin6 M-M 30ft	2085-10P
AT/Serial Adapter Set - converts above cable sets to Din5 and DB9	2085-00S
CPU adapter cables for models with DB25 connectors	
Coax VGA-PS/2 keyboard-PS/2 mouse to DB25M 5ft	2064-02D
Coax VGA-PS/2 keyboard-PS/2 mouse to DB25M 10ft	2064-03D
AT/Serial Adapter Set - converts above cable sets to Din5 and DB9	2085-00S
Rack mounts	
Rackmount: Black anodized, for installation in 19" racks.	1116-00L



ADDENDUM

INSTALLATION AND OPERATION MANUAL FOR VISTA WITH ON-SCREEN DISPLAY

INTRODUCTION TO VISTA OSD

The on-screen-display (OSD) option is available for Vista OSD models. Its purpose is to simplify and enhance the Vista. You can use the OSD to configure the switch, select computers from a list, and to identify the computer that you are in control of. Security is added as an extra feature to prevent unauthorized configuration and access.

On-screen display features

- On-screen display pops on top of existing video
- Configure settings with easy to use menus
- Display name of CPU on screen with adjustable color, font, and position
- Name of CPU fades away after adjustable time
- Switch to computer by name from pop-up window
- Screen saver with four selectable patterns and time-out
- Colors can be solid or transparent (shows computer video through color)
- Adds security function to password protect the configuration
- Adds security function to password protect access to the computers
- Adds new command, the control-L command to lockout the keyboard

CONFIGURATION VIA ON-SCREEN DISPLAY

The on-screen display is used to:

1. Configure the Vista through the configuration menu (control F12 command).
2. Switch to different computers from a window that shows a list of computer names (control escape command).
3. Display the name of the computer to which you are currently switched. The font, color, position, and when the text is displayed is user programmable.

The main configuration menu is accessed by pressing and releasing the **left control** key and then pressing the **F12** key. The menu in *Figure 7* will appear.

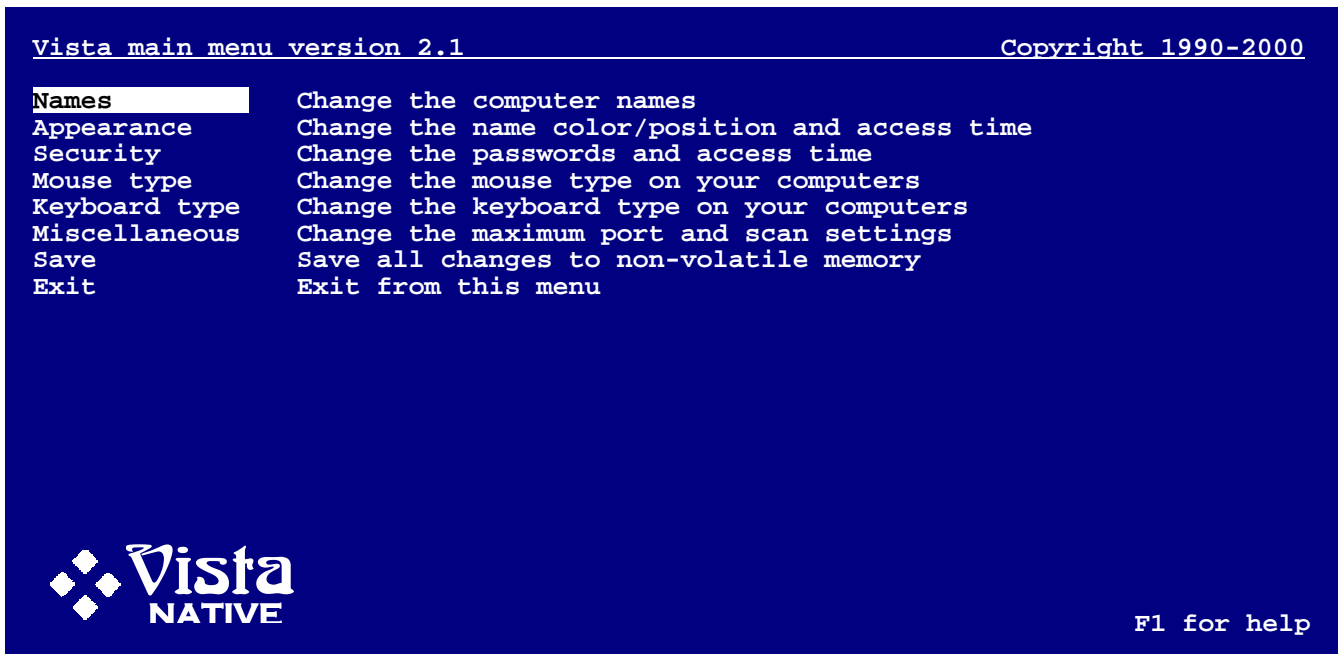


Figure 7. Configuration main menu

The on-screen display shows on top of your computer video, if you are switched to a computer with active video. If no video is present then the background is black.

Navigating the configuration main menu

Using the main menu is very easy and intuitive. Use the arrow keys to highlight a selection and press enter to choose the selection. At any time you can press F1 and you will get the help screen as shown in *Figure 8*.

```
Navigating the menus

Up/down arrows - Moves the highlight bar, so you can choose
                  an item you want to change
Enter           - From main menu, goes to the highlighted page.
                  When a numeric value or name is highlighted,
                  press enter to change the value.
Space bar      - When one of a list of items is highlighted,
                  press enter to scroll through the
                  list of choices
Escape        - Exits the page or aborts the input.

Exit - escape
```

Figure 8. Vista help screen

Configure computer name

Each computer can be given a 16 character name. These names are used in the computer select window and as a label showing the currently selected computer. To change the computer name, use the up and down arrows to highlight a computer name as shown *Figure 9* below.

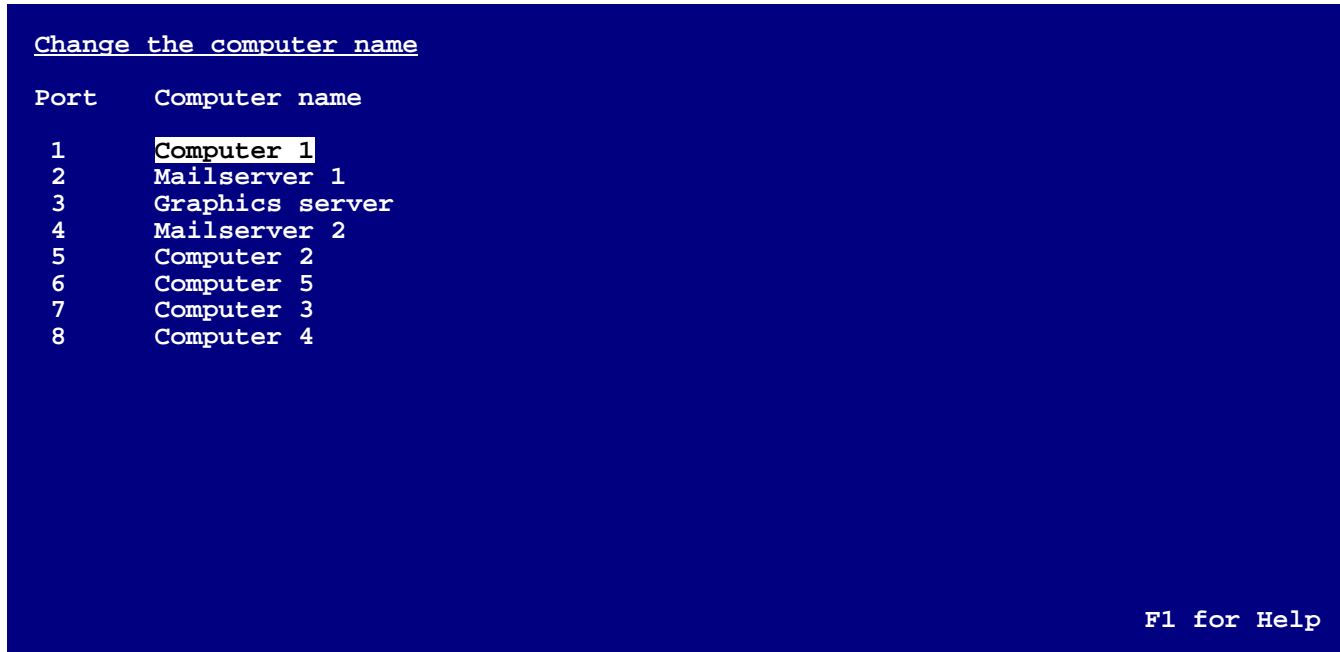


Figure 9. Computer name screen

Press enter to clear the name and use the keyboard to input a new name. All printable ASCII characters are valid in the name field. Use the shift key as normal, to input upper and lower case. The backspace key can be used to edit the field. When you have finished with inputting the name, press enter. The name is saved immediately and is stored in non-volatile memory.

Configure appearance

Use this page to configure the color, position, fadeout time, and font of the computer name label as well as the screen saver type and wait time. The appearance screen is shown below in *Figure 10*.

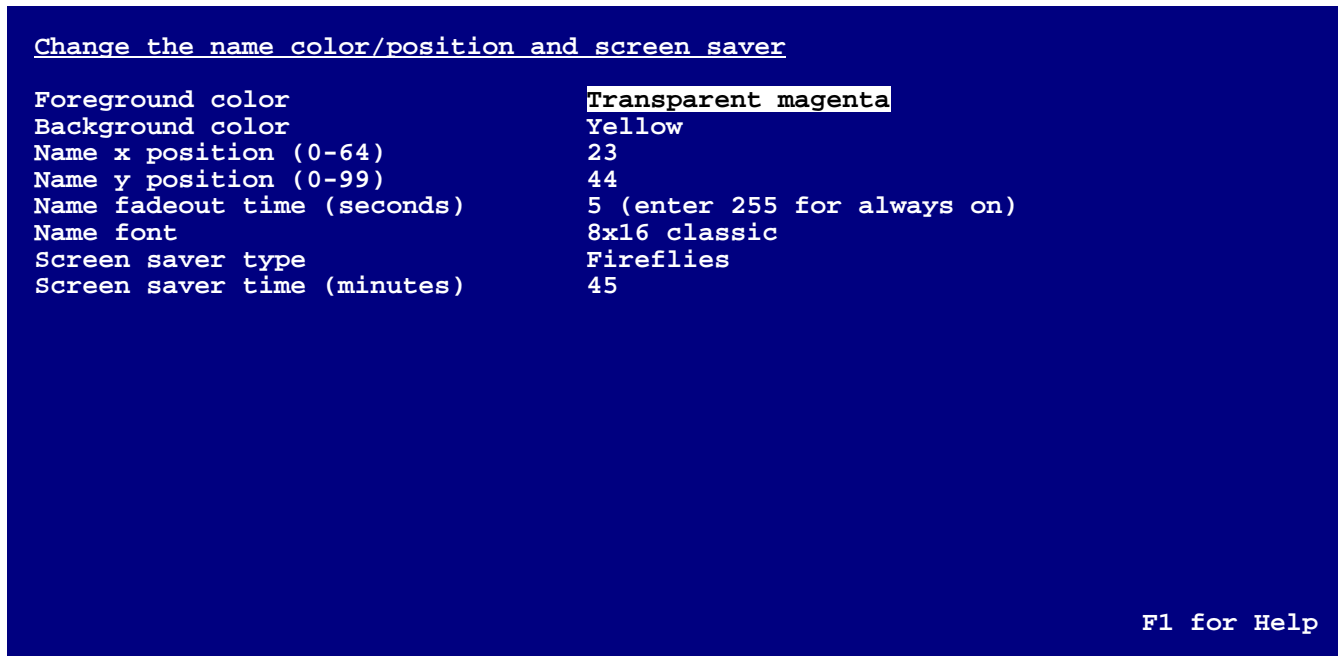


Figure 10. Appearance screen

Appearance: Computer name colors

This item allows you to change the background and foreground colors of the computer label. The solid colors available are: black, red, green, yellow, blue, magenta, cyan, and white. The transparent colors available are clear, red, green, yellow, blue, magenta, cyan, and white. With the transparent colors, you can see through the color to the computer video behind it. When using clear the computer video comes through without any color.

To change the color, press the space bar to cycle through a list of all the colors available. Stop when you come to the color you want. Repeat the same process for the foreground color.

Appearance: Computer name x and y position

With this item, you can change the screen position of the computer name when it is displayed by switching ports. The label can be positioned anywhere on-screen and will maintain the position even as different resolutions of video are input.

To change the position, highlight the x or y position with the up or down arrow keys. Press enter to clear the field and input a new value followed by the enter key. The x position can be changed from 0 to 64 and the y position can be changed from 0 to 99.

Appearance: Computer label fadeout

This item sets the time when the computer label disappears after switching to a computer. With a value of 0, the computer label will not be displayed when switching computers. With a value of 255, the computer label will always be displayed.

To change the computer label fadeout time, highlight the computer label fadeout time with the up or down arrow keys. Press enter to clear the field and input a new value followed by the enter key.

Appearance: Computer name label font

This items sets in which font the computer label is displayed. The choices are:

- 8x16 modern
- 8x16 classic
- 16x24 modern
- 16x24 classic
- 16x32 modern
- 16x32 classic.

The 8x16 sizes are the same as the size in the configuration menus. The 16x24 sizes are 100% larger horizontally and 50% larger vertically than the 8x16 fonts. The 16x32 sizes are 100% larger horizontally and 100% larger vertically than the 8x16 fonts. The modern font is a sans-serif font, similar to Helvetica. The classic font is font with serifs, similar to Times. The actual size of the font on the screen depends upon the resolution of the video that is input. As the resolution increase the fonts become smaller, therefore larger fonts are more visible with higher resolutions.

To change the font, use the up and down arrows to highlight the font. Use the space bar to cycle through a list of the fonts. Stop when the desired font is displayed.

Appearance: Screen saver type

The Vista features a screen saver feature that reduces the wear on your screen and provides security for your system. When there has been no keyboard or mouse activity for a specified length of time (set by the screen saver time setting below), the screen saver turns on. You can blank the screen or choose one of three possible display patterns (fireflies, weaving, or bounce).

Normal video is reactivated when any key is pressed or the mouse is moved. If you are not in an on-screen display menu, then the computer name is also displayed as if you had just switched to a new computer.

To change the screen saver, use the up and down arrows to highlight the font. Use the space bar to cycle through a list of the names. Stop when the desired font is displayed.

Appearance: Screen saver time

This item sets the time in seconds when the screen saver is turned on with no keyboard or mouse activity.

To change the screen saver wait time, highlight the screen saver time with the up or down arrow keys. Press enter to clear the field and input a new value followed by the enter key. You can enter a value from 0 to 999 minutes. The value of zero disables the screen saver function.

Configure security

The Vista allows you to password protect access to the configuration menu and the computers. You can also set a time interval after which you will be disconnected from the currently connected computer with further access requiring a password.

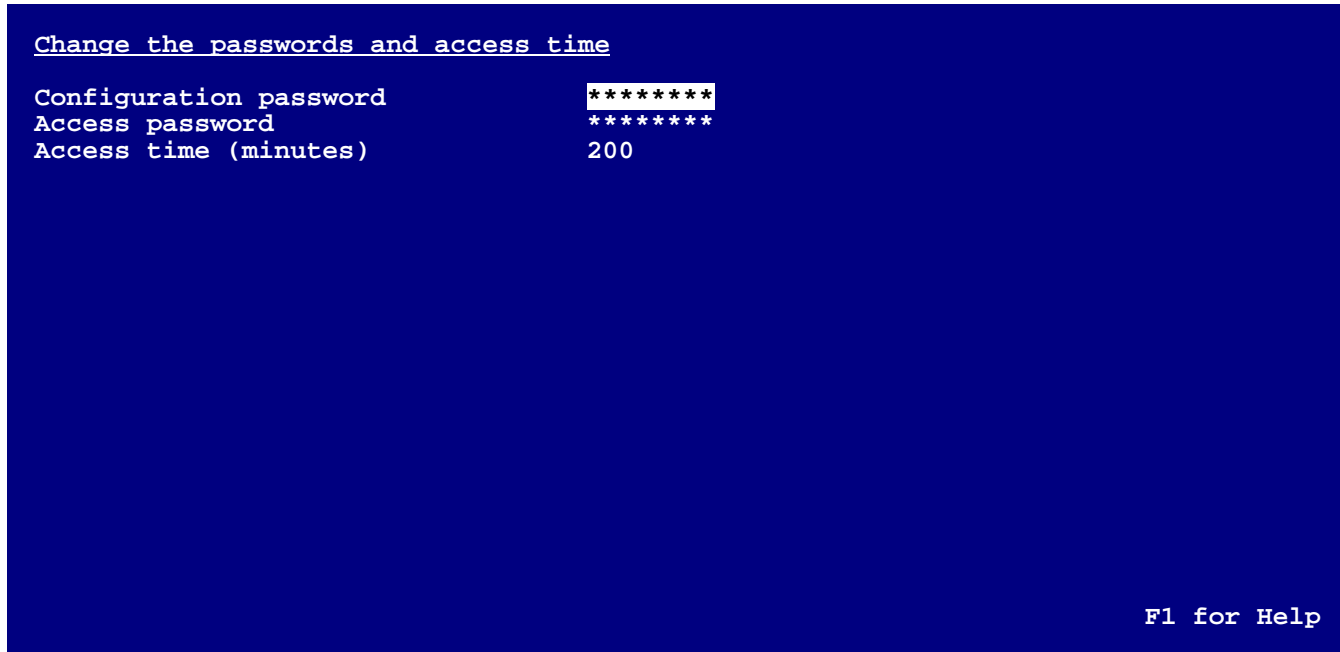


Figure 11. Security screen

Security: Configuration password

This feature is used to prevent unauthorized changes to the switch configuration. To change the configuration password, highlight the configuration password field and press enter to clear the field. Then input up to 8 characters followed by the enter key. An input box appears and asks you to confirm the password. The next time you enter the configuration menu you will be prompted for the password.

Security: Access password

This feature is used to prevent unauthorized access to the computers. To change the access password, highlight the access password field and press enter to clear the field. Then input up to 8 characters followed by the enter key. An input box appears and asks you to confirm the password. When the switch powers on or you have otherwise been disconnected, you will be asked for the access password from a login box.

Security: Access time

This feature is used to automatically log out of the switch after a period of time. The period of time is programmable with the access time field. To change the time, highlight the access time field and press enter to clear the field. Input a new value followed by the enter key. The value can be from 1 to 999 minutes. The access time starts when there is no keyboard or mouse activity. When the access time-out lapses, you will be disconnected and be required to enter the access password from the login box to gain access to the computers.

Locking the keyboard

You can disconnect from the current computer by entering the control L command. This disconnects from the current computer. If no access password has been set, then the screen saver will come on immediately. If there is an access password, a login box will appear and you will be required to enter the access password to gain access to the previously connected computer.

Configure computer mouse

You can assign which type of mouse is used on each computer. To change the mouse type, use the up and down arrow keys to highlight the computer you want to change. Use the space bar to cycle through a list of the mouse types. Stop when you get to the desired mouse type. You have a choice of PS/2, PS2 wheel, or serial 2 button.

```
Change the mouse type on your computers

Port      Mouse type
1         PS/2
2         PS/2 wheel
3         Serial 2-button
4         PS/2
5         PS/2
6         PS/2
7         PS/2
8         PS/2

F1 for Help
```

Figure 12. Mouse screen

Configure computer keyboard

You can assign which type of keyboard mode is used on each computer. To change the keyboard mode, use the up and down arrows to highlight the computer you want to change. Use the space bar to cycle through a list of the keyboard modes. Stop when you get to the desired keyboard mode.

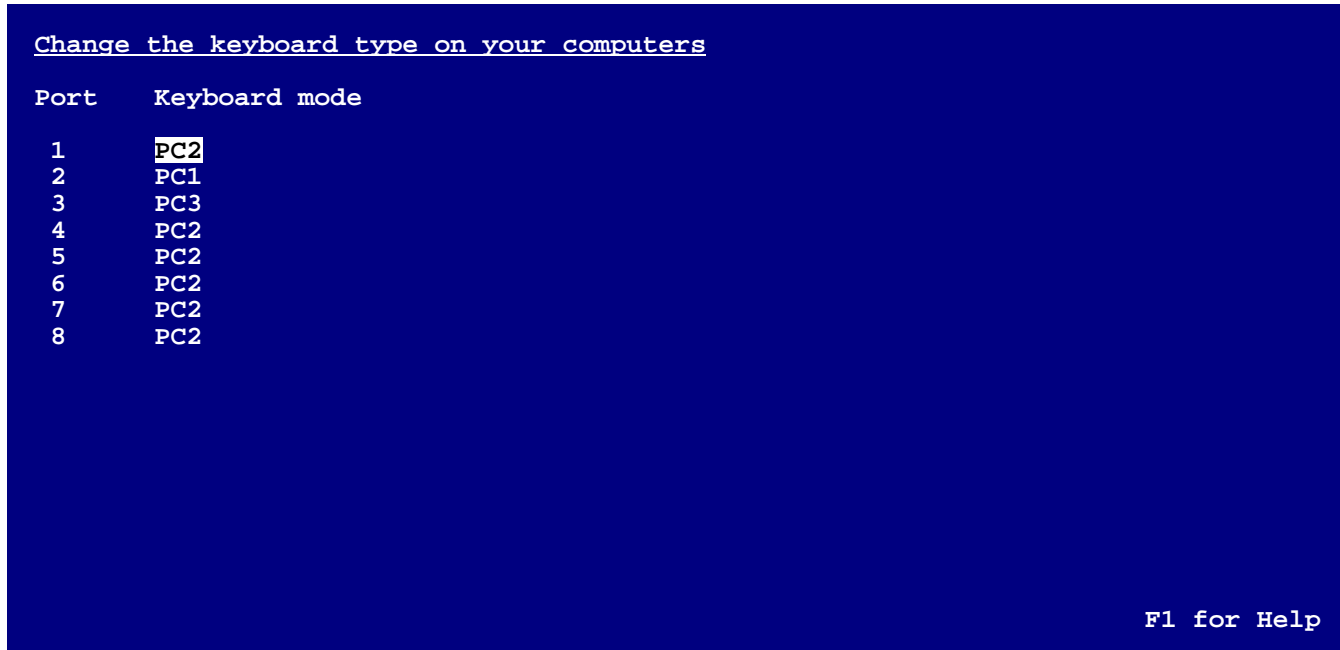


Figure 13. Keyboard screen

There are three possible keyboard modes: mode 1 (PC1), mode 2 (PC2), or mode 3 (PC3). Most PCs are mode 2 and you need not change the default setting. If the computer is a Unix workstation or server, such as an IBM RS/6000, SGI, HP 700 or 9000 series, DEC Alpha, or other, then the CPU should be configured as PC mode 3.

Certain IBM brand PCs are either mode 1 or mode 2. There is no way to know for sure except by booting that computer. You can, however, configure for PC1 or PC2 and test if keyboard communication is correct. If in doubt, reboot the computer. Upon completion of booting a computer, the correct mode should be shown in the keyboard field. Make sure to save it with the on-screen display or the keep command.

Miscellaneous: Maximum ports

This setting configures the total number of computers connected. It allows you to skip scanning of unused ports when all ports are not connected. It also inhibits the computer select window from showing unused computers. To change the maximum ports, highlight the maximum ports with the up or down arrow keys. Press enter to clear the field and input a new value followed by the enter key, see *Figure 14*.

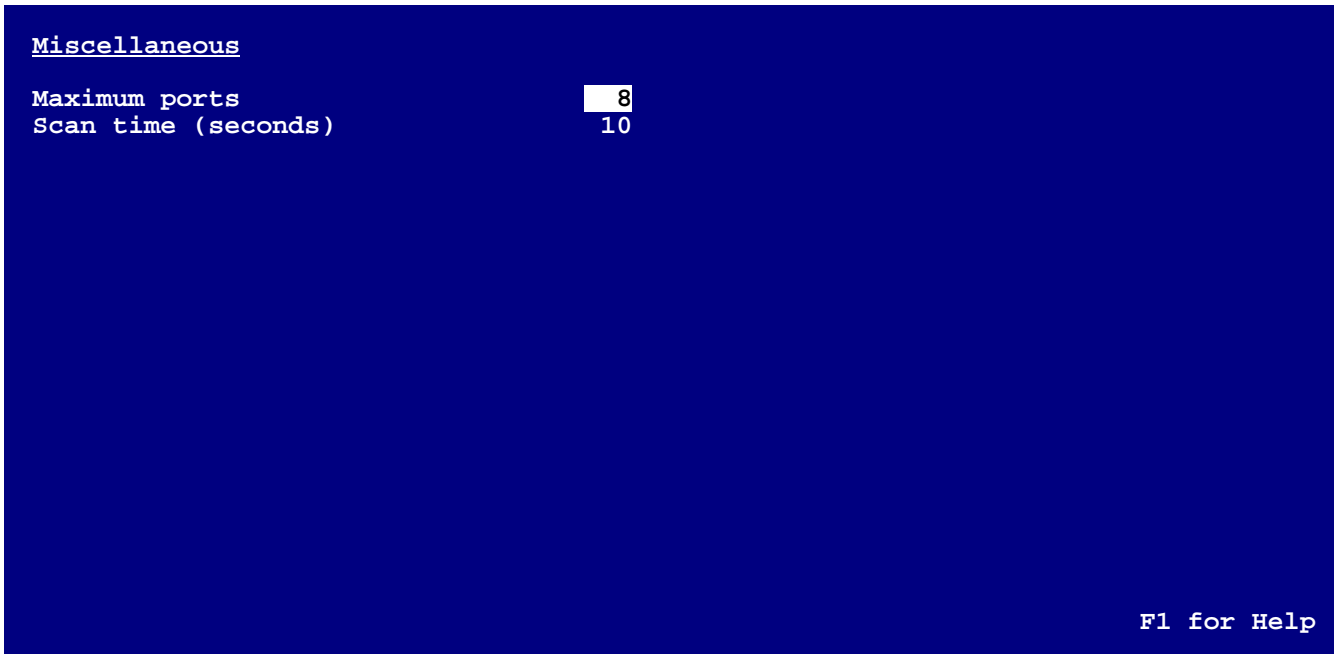


Figure 14. Miscellaneous screen

Miscellaneous: Scan time

This item sets the time, in seconds, that Vista will pause at each of the computers when scanning. The default setting is 5 seconds. To change the scan time, highlight the scan time with the up or down arrow keys. Press enter to clear the field and input a new value followed by the enter key. The value can be from 1 to 16 seconds.

Save

If you want to keep the changes you made to any of the settings, you should use the save function. Use the up or down arrow keys to highlight save and press enter. A message will pop-up to notify you to press enter to save the settings and escape not to save them. Regardless of saving or not, the settings are active. If you did not save the settings and then remove power from the box, the settings will revert to the previously saved values.

Computer select window

You can pop-up a computer select window on top of your computer screen to select a specific computer from a list of computers. Pressing and releasing the left control key and then pressing the escape key accesses the computer select window. The window shown in *Figure 15* will appear. The asterisks in the column after the computer number points to the currently selected computer.

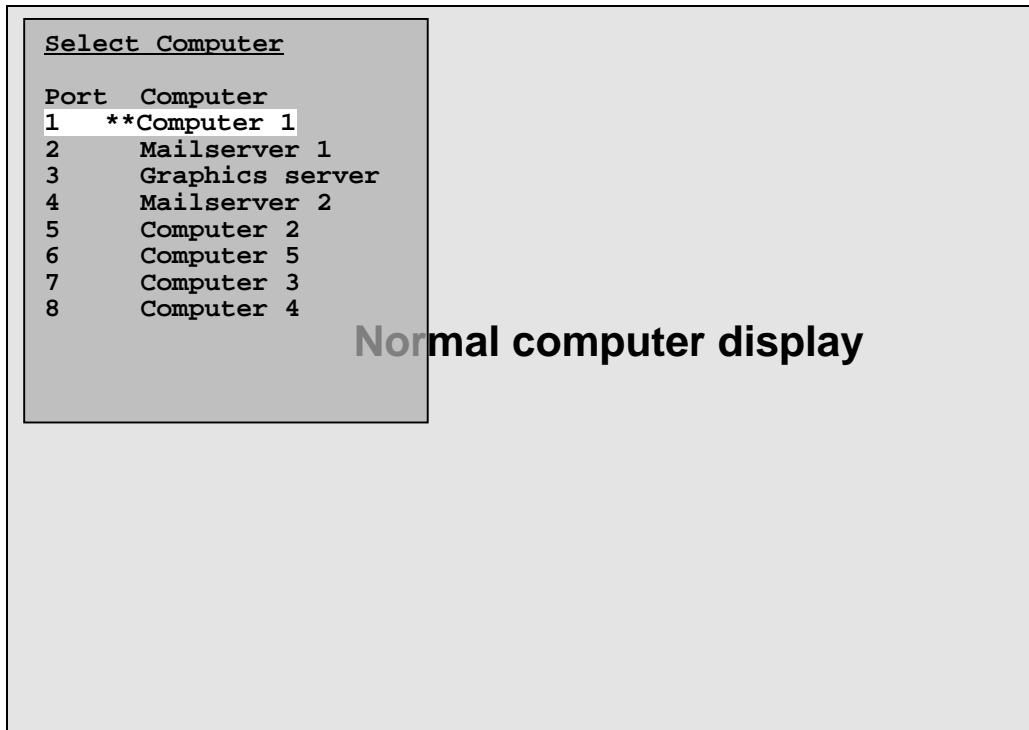


Figure 15. Computer select window

The text is overlaid on top of your current video. Use the up and down arrow keys to select the desired computer and press enter to switch that computer. Only the number of computers, as set by the maximum ports setting, is shown. The color and position of the computer select window are fixed.

When switching to the new computer, the name of the new computer will show in its previously configured position, color, and font.

NOTES:

Dakota Computer Solutions - USA

1579 Lexington Road
Green Oaks, IL 60048
USA
info@dakota-us.com
Tel: +1 847 816 1337
Fax: +1 847 816 4558

Dakota Computer Solutions - Germany

Salzufer 16 / Geb.B
D-10587 Berlin
GERMANY
info-de@dakota-euro.com
Tel: +49 30 8595 37-0
Fax: +49 30 8595 37-99

Dakota Computer Solutions - England

4 Harp Business Centre
Apsley Way
London NW2 7LW
ENGLAND
info-uk@dakota-euro.com
Tel: + 44 181 452 8400
Fax: + 44 181 452 2400

Dakota Computer Solutions - Ireland

Distribution Centre
Shannon Free Zone
Co. Clare
IRELAND
info-ie@dakota-euro.com
Tel: +353 (0)61 70 4000
Fax: +353 (0)61 70 4099

Dakota Computer Solutions - Denmark

Udviklingsparken
Sonderhoj 46
8260 Viby J
DENMARK
info-dk@dakota-euro.com
Tel: +45 (0)8734 5610
Fax: +45 (0)8734 5611

Dakota Computer Solutions - Spain

Francisco De Vitoria 19
Entreplanta 3
E-50008 Zaragoza
SPAIN
info-es@dakota-euro.com
Tel: +34 76 210 256
Fax: +34 76 219 943

