

CoolControl Tiles

– Incorporating Triad Technology

Cooler server temperatures with lower energy consumption

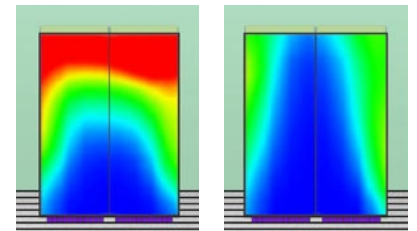
CoolControl Tiles Highlights

- Optimised hi-plume stratification fins
- Patent protected Lift-n-Lock handles provide safe lifting and placement
- Airflow rate up to 65 percent
- Protects cabinet hardware against overheating and downtime
- Optional dampers to reduce airflow
- Significant reduction of energy consumption and costs
- Ultimate load of up to 1360kg

Frequently the cooled air flowing through raised floor panels does not reach servers and IT equipment at top of the server cabinets. Hardware is not cooled properly, overheats and can fail. High-plume airflow and high cold air pressure can resolve these problems. Increasing static air pressure via the CRAC units only increases energy costs and rarely gives the desired effect - pushing cold air to the top of the server racks. The result of using inefficient perforated floor tiles is enormous power consumption, ever increasing energy costs and hotspots which shorten the life of data centre hardware. There is another solution that is cost effective and efficient - CoolControl Tiles are passive perforated floor panels that have 65% airflow throughput ensuring cooler hardware and lower energy costs.

Patented fin design with high airflow for optimum cooling and efficiency

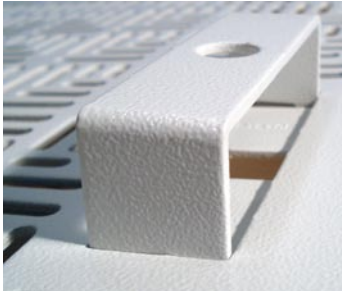
Conventional perforated raised floor panels achieve airflow rates of 20-30%. The CoolControl Tile achieves 65% airflow as well as directing conditioned air to the upper most levels of server racks. The higher the flow rate, the higher the volume of cold air that reaches your rack equipment. It is critical that the perforated raised floor tiles provide enough cold air via high-plume stratification. Only then can the cold air reach the top of the cabinets to cool the upper most hardware. Sufficient cool air is the primary factor in preventing system failures and downtime created by overheating and hotspots. CoolControl Tile's Hi-Plume Stratification Fin scoops air to the upper most servers, while ensuring middle and lower servers also receive required cooling capacity. Through this unique design server temperatures can be decreased by 3-8°C while simultaneously lowering energy consumption. In choosing the most effective perforated floor tiles, remember the following: The higher the airflow rate and the higher the airflow stratification the lower the required cooling capacity resulting in energy and cost savings.



Rack airflow with conventional floor tiles

Rack airflow with CoolControl Tiles

Please click on the graphic for a demo.



Heavy duty panels for high loads with integrated handles

Not only does the airflow rate matter, but also the strength of the perforated floor tiles. These panels often carry heavy loads including fully loaded cabinets. Conventional perforated floor tiles barely manage to carry a maximum weight of 200 - 300kg - without tightened edges. Our CoolControl perforated raised floor panels can reliably carry between 680 and 1360kg depending on the version. Of course easy access is also required. The patent protected integrated Lift-n-Lock® handles provide safe, balanced lifting and placement of tiles without danger of trapping fingers or toes. Integrated handles eliminate the need to lift adjacent tiles to remove the vented floor tile. CoolControl Tiles can pay for themselves in nine to twelve months through higher cooling efficiency and lower energy costs. When including the longer life of hardware through the reduction of hotspots and the time it takes to replace it, the ROI is a matter of months.



Technical Specifications

Perforated floor tile with 65% airflow rate

Dimensions:	600 x 600 mm
Max. load:	680kg or 1360kg
Material:	Antistatic Powder Coated Steel
Adjustment:	levelling screws
Weight:	approx. 18 kg

Order information

Part Number	Description
4260-65040	CoolControl Tile - 65% Airflow Grey Flek 680kg
4260-65070	CoolControl Tile - 65% Airflow Grey Flek 1360kg
4291-00A	Row Blade Baffle (set of 4) used to reduce airflow

For further information please contact us at info.uk@daxten.com, +44 (0)20 8991 6200 or visit www.daxten.co.uk.

About Daxten

Daxten was founded in 1994 as Dakota Computer Solutions. Today Daxten is a Value Add Distributor for IT management, cooling optimisation and data centre facilities solutions from Austin Hughes, Avocent (Cyclades), Dataprobe, Digi, Minicom, PlenaFill/PlenaForm, Raritan (Peppercon), Rose, Server Technology, Triad, Universal Electric (Starline), Upsite Technologies (KoldLok), Uptime Devices. In addition Daxten is a leading manufacturer of its own connectivity product lines. The company has facilities and subsidiaries across Europe and the USA. Daxten is specialist of cutting-edge cooling optimisation and power distribution solutions which improve the energy efficiency and reliability of the data centre. As a provider of high-end KVM, connectivity and infrastructure management solutions it is our mission to support IT managers worldwide, to ease their working life and to protect their companies against critical downtime. In Europe Daxten is headquartered in London and Berlin. For further information please visit www.daxten.co.uk or www.daxten.com.

Daxten CCT data sheet - version 1_2009

Subject to change without notice.

Daxten and the Daxten logo are registered trademarks of Daxten Industries. All other marks are property of their respective owners. Copyright © 2009. Daxten Industries. All rights reserved.

Daxten Ltd, 5 Manhattan Business Park, Westgate
London W5 1UP, UNITED KINGDOM
Tel: +44 (0)20 8991 6200, Fax:+44 (0)20 8991 6299
info.uk@daxten.com, www.daxten.co.uk