

User Manual

Paragon Manager

Raritan Computer Inc.

400 Cottontail Lane
Somerset, NJ 08873
USA
Tel. 1-732-764-8886
Fax. 1-732-764-8887
E-mail: sales@raritan.com
<http://www.raritan.com/>

Raritan Computer Japan, Inc.

4th Flr. Shinkawa NS Building
1-26-2 Shin-kawa, Chuo-ku
Tokyo 104-0033
Japan
Tel. 81-03-3523-5991
Fax. 81-03-3523-5992
E-mail: sales@raritan.co.jp
<http://www.raritan.co.jp>

Raritan Computer France

120 Rue Jean Jaures
93200 Levallois-Perret
France
Tel. 33-14-756-2039
Fax. 33-14-756-2061
E-mail: sales.france@raritan.com
<http://www.raritan.fr>

Raritan Computer U.K. Ltd.

36 Great St. Helen's
London
EC3A 6AP
United Kingdom
Tel. 44-20-7614-7700
Fax. 44-20-7614-7701
E-mail: sales.uk@raritan.com
<http://www.raritan.com>

Raritan Computer Europe, B.V.

Eglantierbaan 16
2908 LV Capelle aan den IJssel
The Netherlands
Tel. 31-10-284-4040
Fax. 31-10-284-4049
E-mail: sales.europe@raritan.com
<http://www.raritan.com/>

Raritan Computer Taiwan, Inc.

5F, 121, Lane 235,
Pao-Chiao Rd., Hsin Tien
Taipei Hsien
Taiwan, ROC
Tel. 886-2-8919-1333
Fax. 886-2-8919-1338
E-mail: sales.asia@raritan.com
<http://www.raritan.com.tw>

Raritan Computer Deutschland GmbH

Lichstraße 2
D-45127 Essen
Germany
Tel. 49-201-747-9820
Fax. 49-201-747-9850
E-mail: sales.germany@raritan.com
<http://www.raritan.de>

**Shanghai Representative Office of
Raritan Computer, Inc.**

RM 19C-1 Shanghai Shiye Building
18 Caoxi North Road
Shanghai China 2000030
Tel. 86-21-64680475
Fax. 86-21-64627964
E-mail: sales.asia@raritan.com
<http://www.raritan.com.tw/>



PMG-0B-E
255-30-6100
June 2004

Copyright © 2004 Raritan Computer, Inc.

This page intentionally left blank.

Trademark Information

Product names mentioned in this document are trademarks or registered trademarks of their respective companies. Paragon, and its logo is a registered trademark of Raritan Computer, Inc. Windows is a registered trademark or trademark of Microsoft Corporation in the United States and other countries. Sun is a registered trademark of Sun Microsystems. All other marks are the property of their respective owners.

System Requirements

Your system must meet these minimum requirements in order to run Paragon Manager:

Memory: 256MB

CPU: 750 MHz Pentium III processor

Minimum available disk space: 50 MB

*For assistance in the U.S., please contact the Raritan Technical Support Team
at (732) 764-8886 or e-mail us at tech@raritan.com*

Ask for Technical Support – Monday through Friday, 8:00am to 8:00pm, EST.

For assistance internationally, please contact your regional Raritan office.

This page intentionally left blank.

Table of Contents

Chapter 1: Introduction	1
Paragon Manager Overview	1
Log On	1
Chapter 2: Operation	3
Customize the Paragon Manager Window	3
Paragon Manager Toolbar	4
Device Panel	5
Device View	5
View by Channel	5
View by Type	5
User Panel	6
Create a User	6
Delete a User	7
View User Properties	8
Save Profiles	8
Load Profiles	9
Device and User Panel Icons	9
Log Panel	10
Edit Event Log Settings	10
Power Strip Window	11
Edit a Power Strip	11
Power Strip Outlet Associations	12
Multi Function View (MFV) Panel	12
System Setup	13
Paragon Manager Help	14
Disconnect and Exit Paragon Manager	14
Chapter 3: Updating Paragon II Firmware	15
Update Paragon Matrix Switch(es) Using a TCP/IP Network	15
Update Paragon Matrix Switch(es) Using a Serial Connection	16
Firmware Update Interrupt Recovery	16
Appendix A: FAQs	17

Table of Figures

Figure 1 Paragon Manager Login Window	1
Figure 2 UMT Profile Window	1
Figure 3 Paragon Manager Window	2
Figure 4 Paragon Manager Window	3
Figure 5 View Menu (check marks indicates panels in view)	3
Figure 6 Device Tree - View by Channel	5
Figure 7 Device Tree - View by Type	5
Figure 8 User Panel	6
Figure 9 Add User Window	6
Figure 10 Change Password Window	6
Figure 11 User Information Window	8
Figure 12 Select Destination Path Window	8
Figure 13 Confirm Load User Profile Window	9
Figure 14 Edit Log Settings Window	10
Figure 15 Power Strip View Window	11
Figure 16 Outlet Information Window	11
Figure 17 MFV Displaying User Data	12
Figure 18 MFV Displaying Power Strip Outlet Data	12
Figure 19 System Setting Window	13
Figure 20 Paragon Update Window	15

Chapter 1: Introduction

Paragon Manager Overview

Thank you for choosing one of Raritan's Paragon series products! Your Paragon UMT appliance includes Paragon Manager, a management and configuration application that lets you display Device, User, Log, and Outlet information in one coordinated graphical user interface. You can Add, Modify, and Delete Devices, Users, or Groups in your Paragon system from one central location, and specify log events to keep an audit trail of events that are updated in real time. Complete administration of your Paragon configuration is possible from a different room or from across the country using Paragon Manager.

Log On

Please note that only Administrators have permissions to log on to Paragon Manager.

1. On the **Start** menu, click **Programs**, and then click **Paragon Manager**. Click **Paragon Manager** once more to launch the Paragon Manager application.
2. When the **Paragon Manager** window appears, on the **Session** menu, click **Connect**.

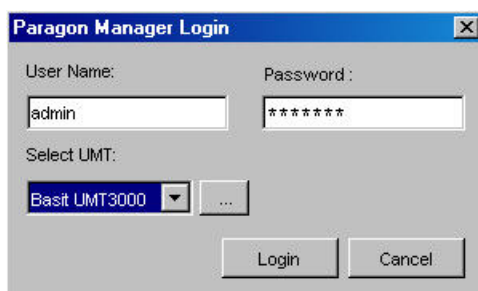


Figure 1 Paragon Manager Login Window

3. Type your user name in the **User Name** field.
4. Type your password in the **Password** field.
5. Click on the **Select UMT** drop-down arrow and select one of the UMT devices from the list.
 - a. If the device to which you want to connect is not listed, click the [...] button to add (or delete) a UMT device. The **UMT Profile** window appears.

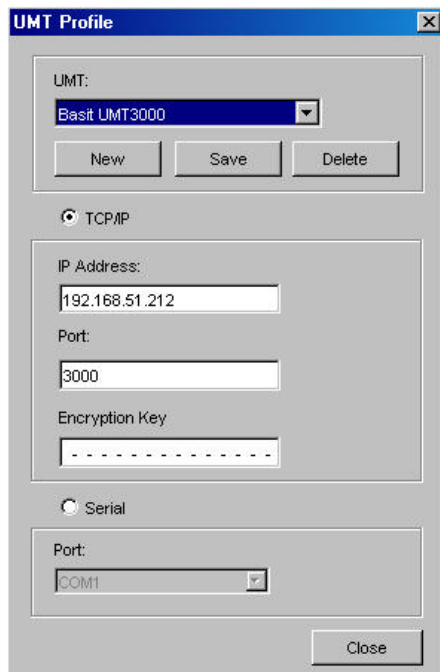


Figure 2 UMT Profile Window

- b. Click [**New**] to add a new UMT device.
 - c. Type the name of the device in the **UMT** field.
 - d. Select the **TCP/IP** option button if you are using Paragon Manager with a UMT unit that has a network admin (RJ45) port. All Paragon II and later UMT models have this port, and must be IP addressed.
 - Type the IP address of the UMT unit with which to communicate in the **IP Address** field.
 - Type the Port number of the UMT unit with which to communicate in the **Port** field
 - Type the appropriate encryption key of the UMT unit with which to communicate in the **Encryption Key** field, if applicable.
 - e. Select the **Serial** option button if you are using Paragon Manager with a UMT unit that has a serial admin (DB9) port.
 - Click on the **Port** drop-down arrow and select the port from the list.
 - f. Click [**Save**] to save this new device and then click [**Close**] to return to the login window.
 - g. To delete a UMT unit from the list at any time, click the drop-down arrow in the UMT field and select the device you wish to delete. Click [**Delete**] to delete the device, and then click [**Close**] to return to the login window.
6. Click [**Login**] to log in to the UMT device through Paragon Manager. The **Communication Progress** window displays your connection status; please note that it can take 30 seconds or longer to connect, depending on your configuration. When connected, the **Paragon Manager** window appears.

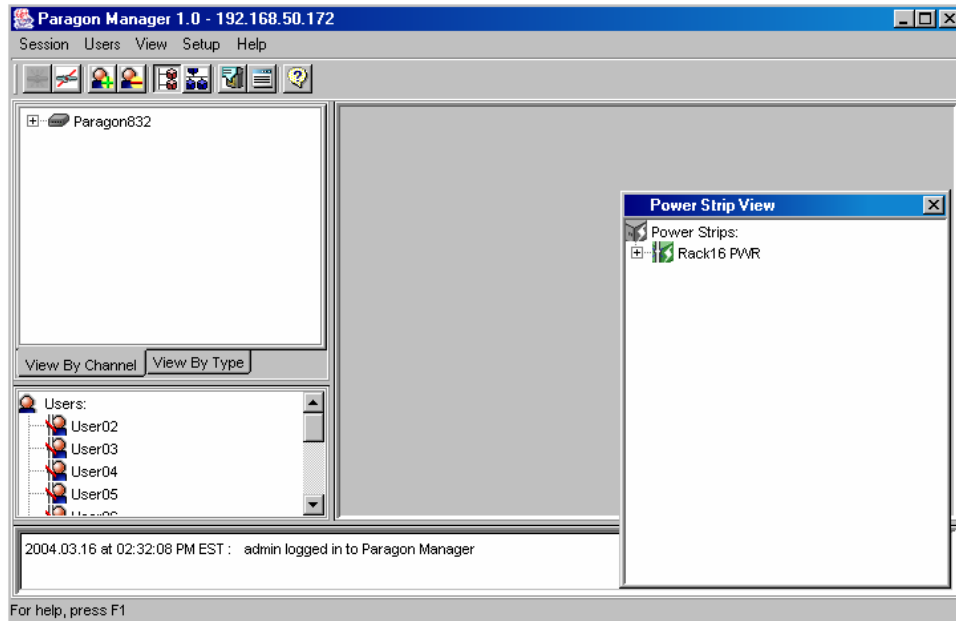


Figure 3 Paragon Manager Window

Chapter 2: Operation

Customize the Paragon Manager Window

The Paragon Manager window contains the Paragon Manager menu bar and tool bar, the Device panel, User panel, Log panel, and Power Strip View window. You can customize your view by resizing panels or by viewing or hiding any of these components (except for the Device panel).

The Device panel displays all connected devices in your Paragon system, and the User panel displays all users in your Paragon system. The Log panel displays the current activity of Paragon Manager. The Power Strip View panel displays any power strips connected in your Paragon configuration.

When you connect to your Paragon unit via Paragon Manager, Paragon Manager downloads the Paragon unit's database and populates the Device, User, and Power Strip panels. All data from the Paragon is visible in the Paragon Manager window. Once a session is initiated, updates to the database happen in real time and changes to the Paragon database from other users are immediately reflected in your Paragon Manager screen.

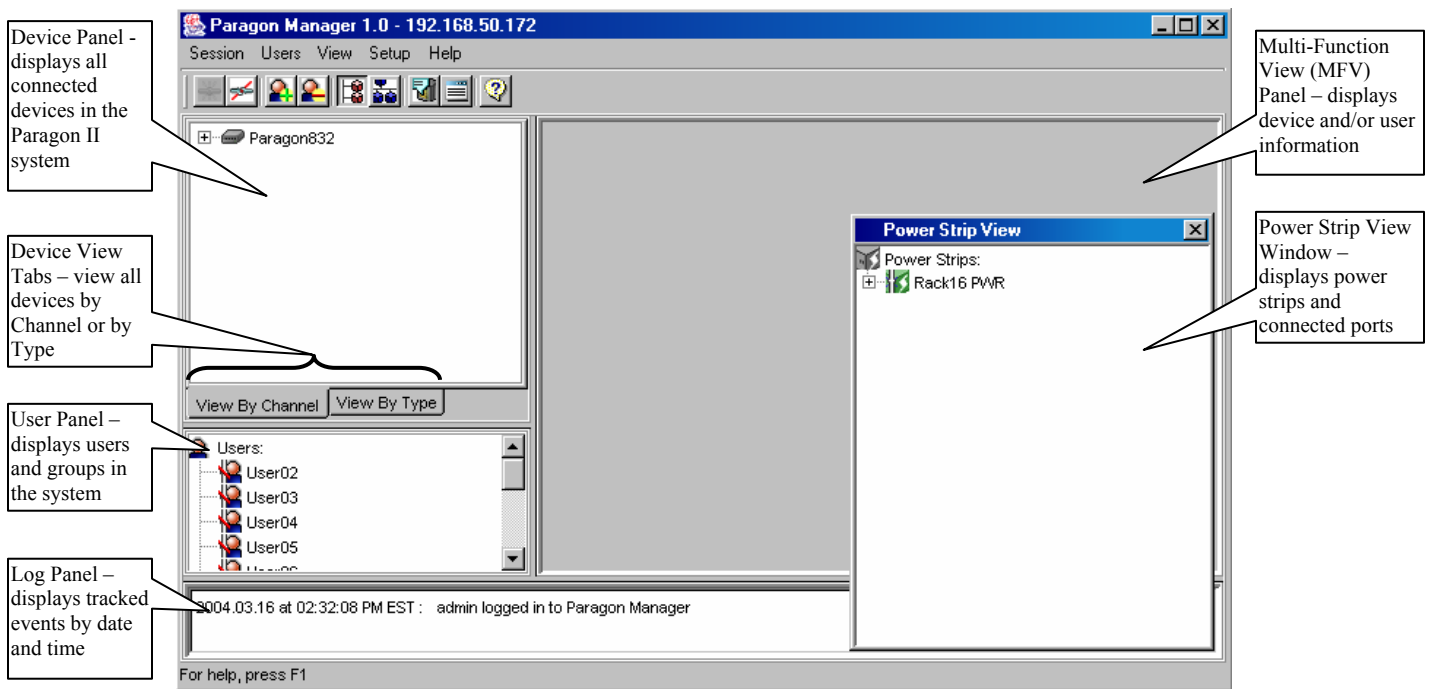


Figure 4 Paragon Manager Window

Display or hide any of these panels, except for the **Device** panel, by selecting options on the **View** menu; click on the desired panels in the menu to view or to hide them. A check mark before the menu item indicates that it is in view. By default, the **Device** panel cannot be hidden.

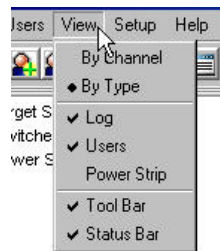











Figure 5 View Menu (check marks indicates panels in view)

Resize the window panels by resting your mouse cursor on the border of two panels until a double-headed arrow appears. Click and drag the arrow to size the panel up/down or left/right.

Paragon Manager Toolbar

The Paragon Manager toolbar displays several most commonly used commands as shortcut buttons in order to save you time.

BUTTON	COMMAND
	Connect: Launches the login dialog for Paragon Manager
	Disconnect: Disconnects the Paragon Manager session
	Add User: Adds a new user account in Paragon Manager and the connected Paragon system
	Delete User: Deletes the user selected in the User View window from Paragon Manager and the connected Paragon system
	View By Channel: Displays the devices in the Device panel by Channel
	View By Type: Displays the devices in the Device panel by Type
	System Configuration: Launches the System properties Setting window for Administrators to edit settings that all connected user stations will follow
	Log File: Launches the Log Setting window for Administrators to configure event filters, event severity, and locations of saved log files
	Help: Launches the Paragon Manager online help manual

Device Panel

The Device panel displays all devices connected to the Paragon unit to which you are connected. To make control easier, you can view devices by Channel or by Type.

Device View

View by Channel

Click on the **View by Channel** tab to display devices in a hierarchical tree by channel. The icon at the top of the tree is the base Paragon device in the configuration. Clicking on the + symbol next to this icon expands the tree to display all devices connected directly to the base, listed in port number order. Tiered switches appear as icons with the + symbol before them, and can also be expanded. Target servers appear as computer icons. Grey computer icons represent a target that is currently powered OFF and blue computer icons represent a target that is currently powered ON, and therefore available. Red computer icons represent a target that is currently occupied.

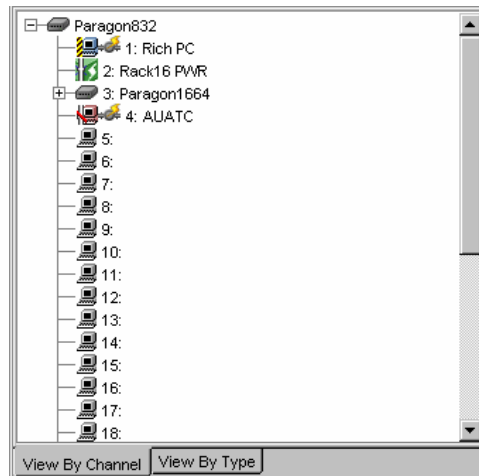


Figure 6 Device Tree - View by Channel

View by Type

Click on the **View by Type** tab to display devices in a hierarchical tree by device type. The three types of devices represented are Switches, Target Devices, and Power Strips. A different symbol represents each type: Switches by a green node, Target Devices by a grey computer, and Power Strips by a lightning bolt. Clicking on the + symbol before each icon expands it to display all devices of that type in the configuration, displayed in alphabetical order.

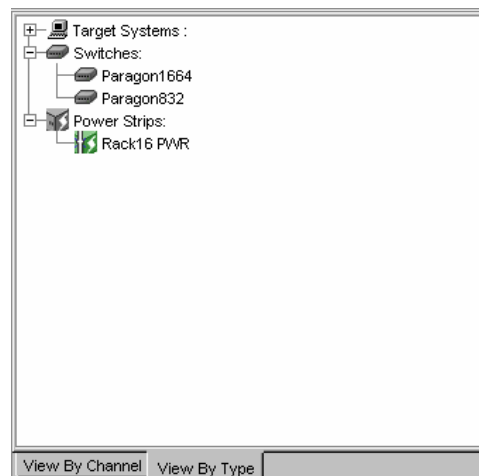


Figure 7 Device Tree - View by Type

User Panel

The User panel displays users stored on the connected Paragon system and displays each user's profile.

Double-click on a user to display the User Information window. As Administrator, you can change account properties for users selected in this window.

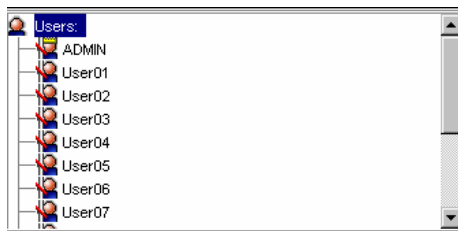


Figure 8 User Panel

Create a User

1. On the **Users** menu, click **Create**. The **Add User** window appears.

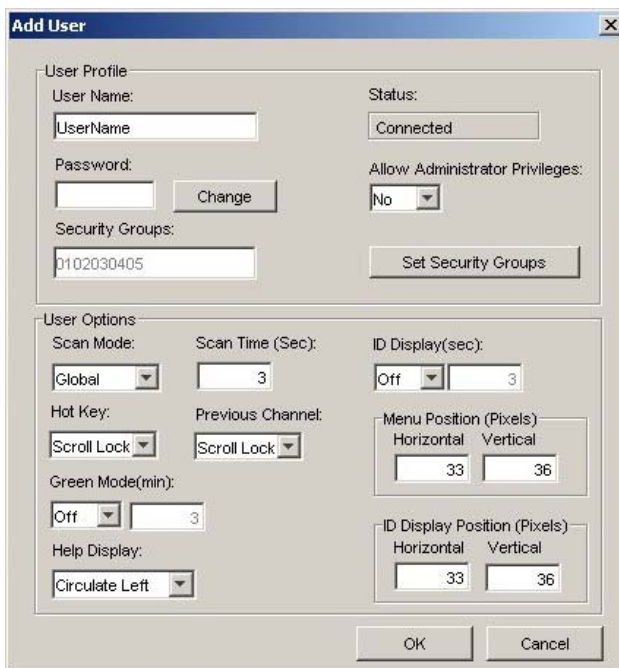


Figure 9 Add User Window

2. Type the new user's name in the **User Name** field.
3. Click [**Change**] and the **Change Password** window appears. Type a new password in the **Enter New Password** field, and re-type the password in the **Repeat Password** field. Click [**OK**] when finished.

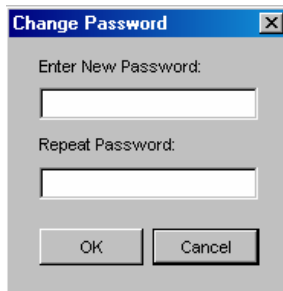


Figure 10 Change Password Window

4. The **Security Groups** field is automatically populated, based on the defaults of the Paragon unit to which you are connected. To change the assigned **Security Groups**, click [**Set Security Group**] and change the default groups (please consult your Paragon User Guide for more information on Security Groups).
5. Click on the **Allow Administrator Privileges** drop-down arrow and select an option from the list.
6. In the User Options panel, click on the **Scan Mode** drop-down arrow and select the scan mode for this user. Global scan mode, the default, scans each channel for the same amount of time (default time = three seconds), and Individual scan mode scans each channel for a specified time you type in. To change the number of seconds for either type of scan, type the new duration of seconds in the **Scan Time (Sec)** field.
7. Click on the **Hot Key** drop-down arrow and select a key from the list. When you press this key twice rapidly on any user station in your Paragon configuration, the Paragon Manager window will appear. Note that this option is *set* in Paragon Manager, but is *used* anywhere in the Paragon system.
8. Click on the **Previous Channel** drop-down arrow and select a key from the list. When you press this key on any user station in your Paragon configuration, the channel previously viewed will appear. Choose **None** to override this capability. Note that this option is *set* in Paragon Manager, but is *used* anywhere in the Paragon system.
9. Click on the **Green Mode (min)** drop-down arrow and turn Green Mode (Powersave mode) Off or On. If you select **On**, type in the number of minutes after which, if there is no keyboard or mouse activity, the user station monitor goes blank.
10. Click on the **Help Display** drop-down arrow to select how you want to view the Paragon help screen when activated from any user station in your Paragon configuration. Help text can be active, scrolling across your screen from right to left, or it can be displayed in a single line.
11. Click on the **ID Display (sec)** drop-down arrow to turn the ID display Off or On. If you select **On**, the ID Display will remain on the user station monitor for the number of seconds you type into the next field.
12. In the **Menu Position** and **ID Display Position** panels, enter the **Horizontal** and **Vertical** placement of the menu on any of the user station monitors in your Paragon configuration.
13. Click [**OK**] when finished, or click [**Cancel**] to exit without adding a new user.

Delete a User

Deleting a user in the Paragon Manger window deletes the user account from the Paragon Manager screen and from the currently connected Paragon system.

1. In the User panel, click on the user you want to delete.
2. On the **Users** menu, click **Delete**. A **Confirm User Delete** window appears.
3. Click [**Yes**] to delete the user or click [**No**] to close the window without deleting.

Note: The Admin user cannot be deleted.

View User Properties

Administrators can modify user properties from the Paragon Manager interface as needed.

1. In the User panel, click on the user whose properties you want to modify.
2. On the **Users** menu, click **Property**. The **User Information** window appears.

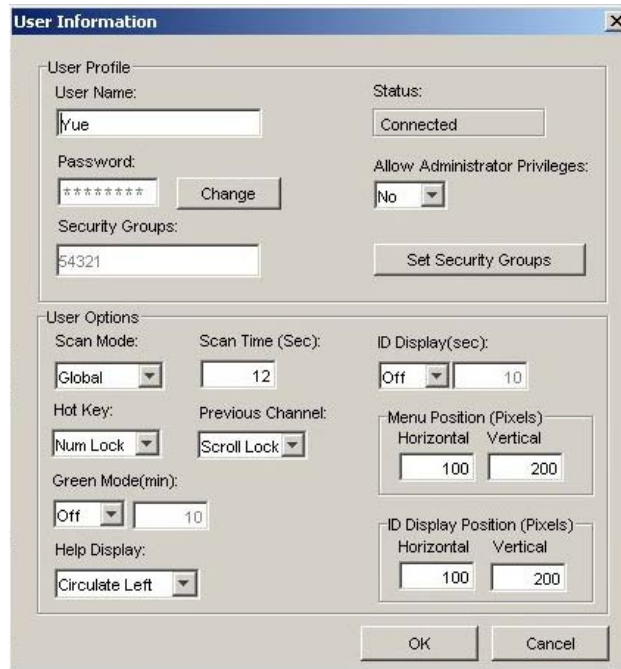


Figure 11 User Information Window

3. Change any of the user's properties, according to the guidelines just outlined in the section *Create a User*.
4. When finished, click [OK] to change the user properties or click [Cancel] to close the window.

Save Profiles

As an Administrator, you can back up the User Database of the connected Paragon system to your local computer using the **Save Profiles** command.

1. On the **Users** menu, click **Save Profiles**. The **Select Destination Path** window appears.

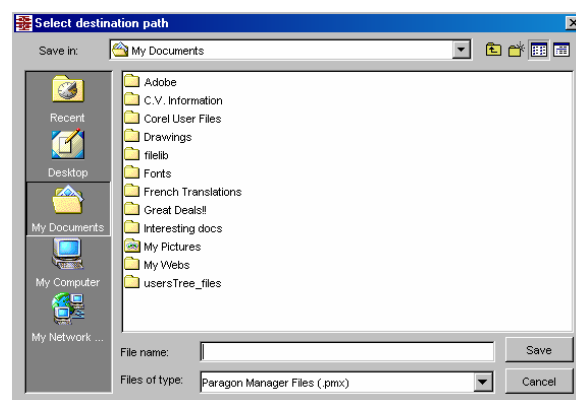


Figure 12 Select Destination Path Window

2. Browse through the local system until you find the location where you want to save the Profile. Type the name of the file in the **File Name** field and click [Save]. A confirmation window will display the path to the folder and file you just chose. Click [OK] to close the window.

Load Profiles

Use the Load Profiles command to restore previously backed-up Paragon Overview files.

1. On the **Users** menu, click **Load Profiles**. The **Confirm Load User Profile** window appears.

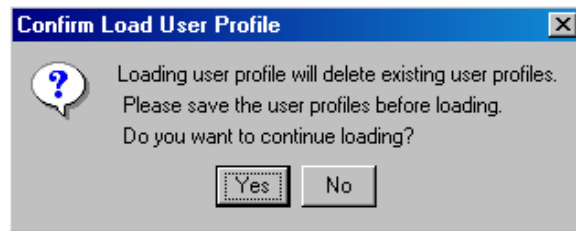


Figure 13 Confirm Load User Profile Window

2. Click **[Yes]** to load existing user profiles, or click **[No]** to exit the window.

Note: If you load a user profile for a user currently in Paragon Manager, the older profile will replace the new profile.

Important: The Load Profiles command can be used to restore previously saved Paragon Overview system database files (*.mxd files) from an older Paragon HW3 configuration.

Device and User Panel Icons

ICON	INDICATES:
	Admin logged in and Connected
	Admin logged in and Disconnected
	Admin logged out and Disconnected
	User logged in and Connected
	User logged in and Disconnected
	User logged out and Disconnected
	Power Strip outlet – power off (CPU)
	Power Strip outlet – power on (CPU)
	Power Strip outlet – power off (PWR)
	Power Strip outlet – power on (PWR)
	Channel Available
	Channel Available with one power strip outlet association
	Channel Available with multiple power strip outlet associations
	Channel Disconnected
	Channel Disconnected with one power strip outlet association
	Channel Disconnected with multiple power strip outlet associations
	PC Occupied by a user
	PC Occupied by a user with one power strip outlet association
	PC Occupied by a user with multiple power strip outlet associations
	Power Strip Connected

Log Panel

Edit Event Log Settings

The Log panel located at the base of the Paragon Manager window displays events that occur in your Paragon system. As an Administrator, you can record and configure standard events and message filters, and set severity levels for events, color-coding them for easier identification.

1. On the **Setup** menu, click **Log Setting**. The **Edit Log Setting** window appears.

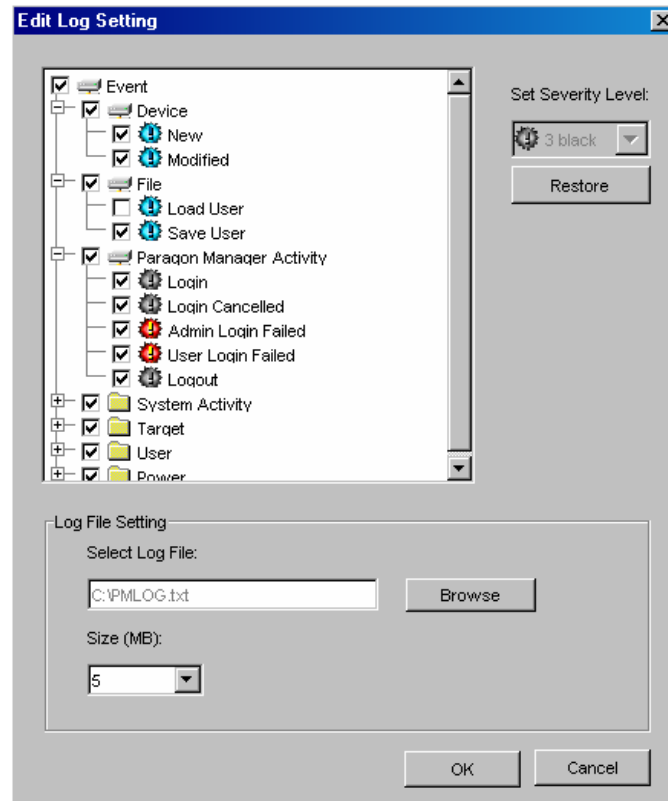


Figure 14 Edit Log Settings Window

2. Click on the + and – signs to expand and collapse the event tree in this window. Entries in the event tree are pre-determined events programmed into Paragon Manager.
3. Click on the check box before a device to select and specify events for recording in the log panel. Select an event for the device.
4. On the right side of the window, click on the **Set Severity Level** drop-down arrow and select a severity level – levels are color-coordinated: high severity is represented by a red icon, medium severity is blue, and lowest severity is black. To restore the default levels for the events, click [**Restore**].
5. In the Log File Setting panel, click [**Browse**] to find the location in which to store the log of these events in the **Select Log File** field. Click on the **Size (MB)** drop-down arrow to select the file size limit (default limit is 4MB). Once the log file hits the size limit set in this field, Paragon Manager automatically creates a new log file and continues to store events.
6. Click [**OK**] to save the log settings, or click [**Cancel**] to close the window.

Power Strip Window

The Power Strip window is a mobile display of Raritan Remote Power Control Strips connected to your Paragon unit. Each node in the Power Strip tree represents a power strip; click on the + and – signs to expand and collapse the view of devices plugged into each of the serially-controlled Power Strip outlets. If the Power Strip View window is not visible, on the **View** menu, click **Power Strip**.

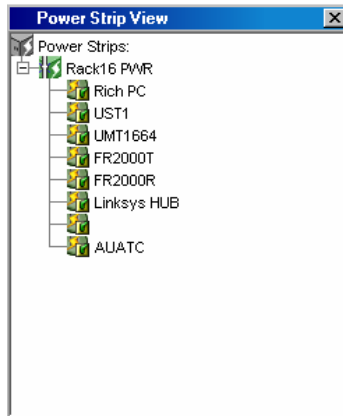


Figure 15 Power Strip View Window

Paragon Manager automatically detects Raritan Power Strips connected to your Paragon system. Click on any Power Strip in the tree to view its outlets. Click on the + and – signs to expand and collapse the view. Right click on any Power Strip outlet to view its properties.

Edit a Power Strip

To organize the Power Strips in your Paragon configuration and to keep track of the machines to which they are connected, you may want to name the Power Strips and outlets.

1. Double-click on any Power Strip icon to view its properties. The **Outlet Information** window appears.

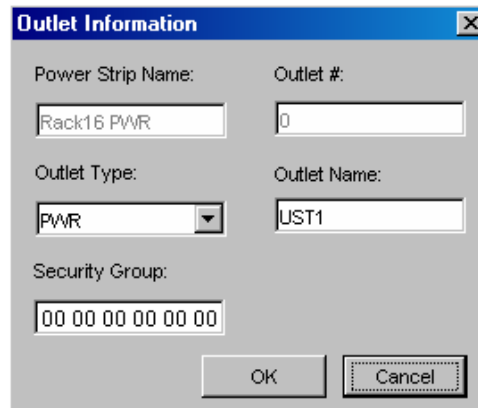


Figure 16 Outlet Information Window

2. The default name of the strip appears in the **Power Strip Name** field. Type a new name if needed.
3. Type the outlet number in the **Outlet #** field.
4. Click on the **Outlet Type** drop-down arrow to select either a Power (PWR) or CPU type outlet.
5. Type the name of the outlet in the **Outlet Name** field.
6. Type the Security Group in the **Security Group** field.
7. Click **[OK]** to save the changes, or click **[Cancel]** to close the window.

Note: Because the Power Strip cannot detect what device type is associated with a specific outlet through the power cables, outlet associations must be created manually before an outlet can indicate to what type of device it supplies power.

Power Strip Outlet Associations

You can assign specific devices to unassigned Power Strip Outlets from the Paragon Manager interface.

1. Ensure that the Power Strip View window is in view. Expand the Power Strip tree so you can see the outlet to which you plan to assign the selected device.
2. Click on a device in the Device panel and drag this device to the selected outlet icon.
3. When you release the device, its name appears next to the outlet icon. The device is now associated with that outlet, and you can control it from Paragon's OSD.

Note: For devices with redundant power supplies, one device can be associated with up to four outlets

Multi Function View (MFV) Panel

The MFV panel of the screen displays detailed information of items you select in the Device panel, User panel, or Power Strip window and allows Administrators to edit item properties from this list.

If you select a device in the Device tree, the MFV displays target-related information: name, device type, security group, and device status. If you select a user in the User tree, the MFV displays user-related information: user name, Admin status, security group, scan rate, and connection information. If you select a power strip outlet, the MFV displays outlet name and connected device type.

Administrators can double-click on an entry in the MFV to activate the properties window for that entry, and modify data for devices, users, or outlets, as described in the respective sections of this chapter.

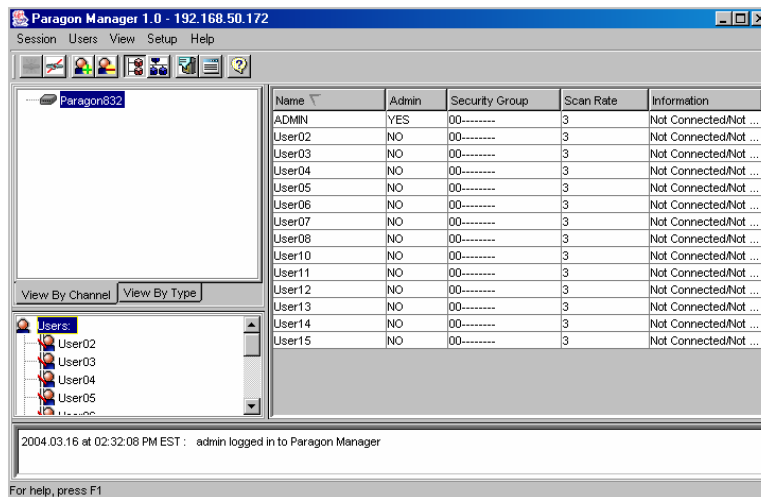


Figure 17 MFV Displaying User Data

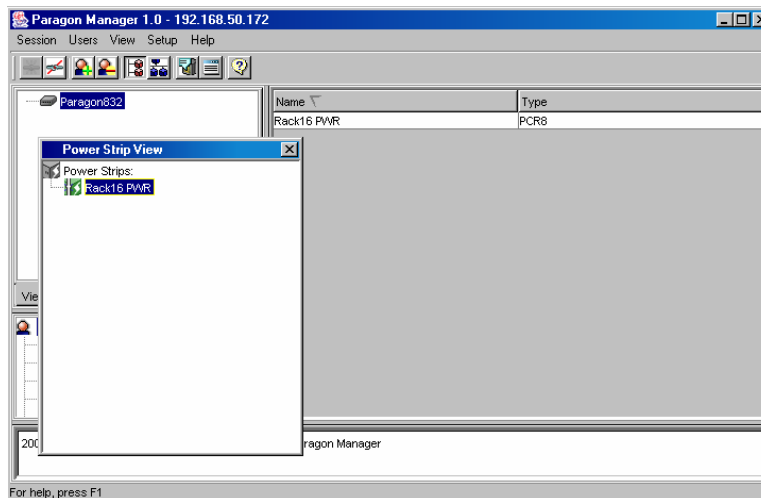


Figure 18 MFV Displaying Power Strip Outlet Data

System Setup

The System Setting command allows you to adjust system settings such system name, operation mode, and others, as described below.

1. On the **Setup** menu, click **System Setting**. The **System Setting** window appears.

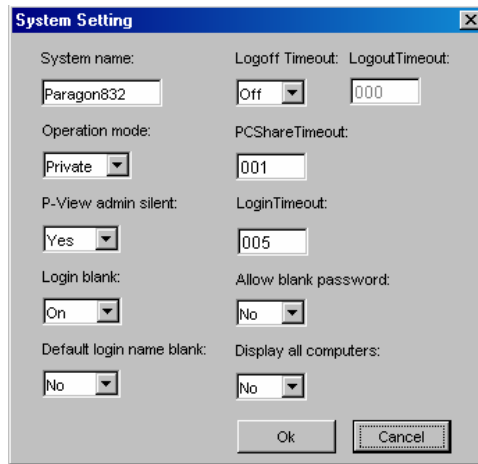


Figure 19 System Setting Window

2. The default name of your system appears in the **System** name field. Edit this name if needed.
3. Click on the **Logoff Timeout** drop-down arrow to turn the timeout Off or On. This property indicates whether you want a user to be logged out of the system after a specified period of inactivity. If you turn **Logoff Timeout** On, type a time in seconds in the **Logout Timeout** field.
4. Click on the **Operation mode** drop-down arrow and select Private, P-View, or PC Share. In **Private** view, a computer can be accessed by only one user at a time, in **P-View**, or Public View, while one user is accessing a computer, another user can select and view that user's video (a status message appears on the monitors when P-View is active), and in **PC Share** view, a computer can be selected and accessed by more than one user, but only one user can be in control at any one time; if the user in control is idle for duration specified in the **PCShareTimeout** field, another user can take control of the PC.
5. If you chose **PC Share** as your Operation Mode, type a time period, in seconds, after which an inactive user is logged off a computer in the **PCShareTimeout** field.
6. If you chose **P-View** as your Operation Mode, click on the **P-View admin silent** drop-down arrow and select Yes or No. Selecting Yes gives Administrators the ability to view other users' video on other machines without activating the status message on the user's monitor.
7. Click on the **Login Blank** drop-down arrow to turn this property On or Off. Selecting on causes the monitor on a user station to go blank if the user is inactive for a specified time. The user can press any key to reactivate the monitor.
8. Click on the **Allow blank password** drop-down arrow and select No or Yes. Selecting No prevents users from leaving the Password field blank instead of spelling out a new password. A newly created user has no password by default until the user or the administrator sets one.
9. Click on the **Default login name blank** drop-down arrow and select No or Yes. Selecting No causes the default login name not to appear in the user name field of the Login Menu on a user station.
10. Click on the **Display all computers** drop-down arrow and select No or Yes. Selecting No prevents users from viewing all devices in the Devices panel, whether or not the user has security privileges to access them.
11. Click [**OK**] when you have finished changing System Settings or click [**Cancel**] to close this window.

Paragon Manager Help

On the **Help** menu, click **Index** to view an online Paragon Manager help.

On the **Help** menu, click **About Paragon Manager** to view the Paragon Manager **About** window, which displays the product name and version information (you may need this information if you call Raritan Technical Support).

Disconnect and Exit Paragon Manager

On the **Session** menu, click **Disconnect** to disconnect from a currently running Paragon Manager session.

On the **Session** menu, click **Exit** to close the Paragon Manager application. If a session is currently running when you Exit, the session will be disconnected.

Chapter 3: Updating Paragon II Firmware

To take advantage of the latest features and ensure the best performance of your Paragon system, upload the newest levels of firmware onto each component of your Paragon configuration.

Paragon Manager will facilitate the transfer of firmware to your Paragon II units. The latest versions of firmware can be downloaded from Raritan's web site, at <http://www.raritan.com>. Click on the **Support** link in the top navigation bar, and then click on the **Firmware Upgrades** link in the left navigation bar.

Before performing a firmware upgrade, be certain to read the release notes (if available) that are included with the firmware distribution on Raritan's website!

Note: In order to perform a firmware update, you do not need to power OFF any of the servers or devices connected to Paragon II. Because of Paragon's modular and redundant design, these devices will not be affected during the update process.

Update Paragon Matrix Switch(es) Using a TCP/IP Network

After you have successfully logged in and started a Paragon Manager session:

1. On the **Tools** menu, click **Firmware Update**.
2. When notified that the Paragon unit session must be closed, click **[Yes]** to proceed.

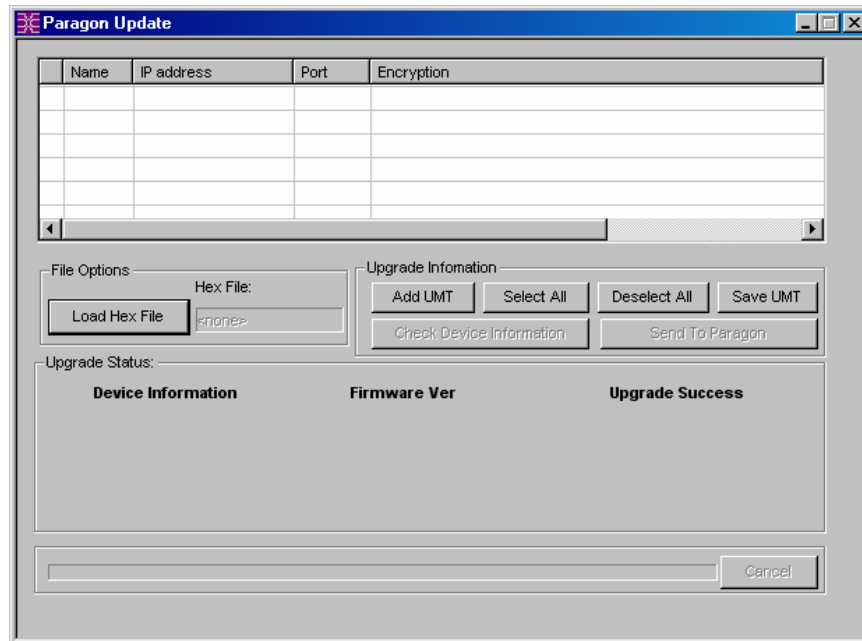


Figure 20 Paragon Update Window

3. The **Paragon Update** window appears, displaying a chart of Paragon II UMT units to be updated (this chart will be blank when Paragon Update is first launched). Add a Paragon unit to the chart by clicking **[Add UMT]**. Type the **IP Address** and **Port** of the Paragon II UMT unit, and the encryption key if necessary.
4. Repeat step 3 until all Paragon II UMT units in the system have been added to the list.
5. A checkbox on the left of each entry indicates that this UMT will be updated. Make sure all the Paragon units in the system that you want updated are checked. Please note that any connected Paragon II Stacking Switches will be automatically updated by the UMTs to which they are connected.
6. Click the **[Load HEX File]** button. This will open a dialog box where you can select the appropriate Paragon Firmware update file.
7. Click **[Open]** to select the firmware for the update.
8. After selecting the firmware update file, click the **[Send to Paragon]** button. The utility will send the selected update file to all checked Paragon II UMT units in the list and update them.

Update Paragon Matrix Switch(es) Using a Serial Connection

1. Connect one end of the Paragon Download cable (included with all Paragon units and all User Stations) to the port labeled **Admin** on the back of the unit (DB9F). Connect the other end of the cable to the serial port of any computer with Paragon Update installed. To ensure reliable communication, you should use only the Paragon Download cable for this process.
2. Launch the Paragon Update utility.
3. A window will display a chart of Paragon II UMT units to be updated (this chart will be blank if it is the first time an update is executed).
4. Click [**Add UMT**] to add a Paragon unit to the chart.
5. Click on the **IP address/Serial** drop-down arrow and select **Default Serial**.
6. In the **Port** column, type the appropriate **COM** port (COM1 through COM4) on the PC connected to the Paragon unit.
7. A checkbox on the left of each entry indicates that this UMT will be updated. Make sure all the Paragon units in the system you wish to update are checked. Please note that any connected Paragon II Stacking Switches will be automatically updated by the UMT to which they are connected.
8. Click [**Select HEX File**]. A dialog box where you can select the appropriate Paragon Firmware update file appears. Click [**Open**] to select the firmware for Paragon Update.
9. Click [**Send Update to Paragon**]. The utility will send the selected update file to all the checked Paragons on the list and update them.

Firmware Update Interrupt Recovery

If a firmware update is interrupted or if it fails to complete, Paragon has a fail-safe feature that allows recovery and returns the unit to a downloadable state.

1. On the front panel of the UMT, press and hold the left (◀) and right (▶) arrow buttons.
2. While holding the left (◀) and right (▶) arrow buttons, power ON the unit.
3. The unit will go into *download* mode.
4. You can now attempt to download the firmware again. Please follow the steps outlined in the *Update Paragon Matrix Switch(es)* sections above.

If you experience any problems, please contact your local Raritan Technical Support Center.

Appendix A: FAQs

QUESTION	ANSWER
How do I connect to a Paragon System / add a Paragon System to the Connect List?	<p>On the Session menu, click Select (or click on the Connect shortcut button in the toolbar).</p> <p>When the Login window appears, select the Paragon device to which you wish to connect from the drop-down list.</p> <p>If the Paragon system you need is not on the list, add it by clicking the [...] button next to the drop-down arrow. Enter the information corresponding to the Paragon unit into this UMT Profile window, and click [OK] to add the UMT profile to the list.</p> <p>Type username and password for this system into the Login window and click [OK] to connect to the system.</p>
How do I add new users?	<p>On the User menu, click Create (or on the toolbar, click Create User).</p> <p>When the Add User window appears, type the new user name and new password and configure other options as needed.</p> <p>Click [OK] to save user.</p>
How do I modify existing users?	<p>Double-click on the user icon in the User panel.</p> <p>When the User Properties window appears, modify the properties.</p> <p>Click [OK] to save changes.</p>
How can I modify the Paragon configuration?	<p>On the toolbar, click the System Configuration button.</p> <p>When the System Configuration window appears, set general configuration settings for the entire Paragon configuration.</p> <p>Click [OK] to save changes.</p>
How can I view / modify target data?	<p>Select the View By Channel tab in the Device panel, expand the tree if necessary, and double-click on the target.</p> <p>When the Target Information window appears, modify the information as needed.</p> <p>Click [OK] to save changes.</p>
How do I edit switch properties? (Switches are a little different, since each switch will form an expandable node in a View By Channel window. Thus, if you double click on a switch there, you will expand the node and show a list of targets underneath.)	<p>Select the View By Type tab in the Device panel, expand the tree if necessary, and double click on the switch.</p> <p>When the Switch Properties window appears, edit the switch name or model type from the pull-down list (these are the only editable fields).</p> <p>Click [OK] to save changes.</p>
How do I associate target servers with outlets?	<p>Activate the Power Strip View window and expand the tree to view the power strip the device is connected to.</p> <p>When that power strip's outlets appear, drag the icon representing the target server from the Device panel to the icon representing the outlet in the Power Strip View window. The outlet's type will automatically reset to "CPU" and the outlet will be renamed to reflect the new target now associated with it.</p> <p>Please Note: Any single device can be associated with up to four power outlets. Once a device is associated with a power outlet, a small black power cord icon is placed next to its icon in the device view window. Devices with two or more associated outlets will show two power cord icons.</p>
How do I configure the Events Filter?	<p>On the Setup menu, click Log Settings.</p> <p>A node window appears. Each of the nodes represents a category of events the Paragon system can report.</p> <p>Expand a node to display a list of specific alerts that fall under that category, each with its own checkbox. Click the checkboxes next to</p>

QUESTION	ANSWER
	<p>the events for which you want to receive notice and uncheck the events you do not wish to see.</p> <p>The drop down list on the right of the window offers Administrators the ability to set severity levels for events. Select an event in the tree, and then select a severity level from the list. Severity is listed on a scale of 1-3.</p> <p>Under Log File Setting, configure the path of the log files being saved, and the maximum size of the log file. Once the log file's max sized has been reached, Paragon Manager will create a new log file to continue the logging process.</p> <p>Click [OK] to save changes or click [Restore] to return Paragon Manager to its previous configuration.</p>
<p>How do I resize / hide View panels?</p>	<p>To resize View panels, hover your mouse cursor at the edge of that window until it becomes a double-pointed arrow. Drag up/down or left/right to resize the window.</p> <p>To hide panels, on the View menu, select the panel you want hidden. Unchecked windows are hidden from view. To view a panel again, on the View menu, select the panel you wish to display.</p> <p>Please remember that you can hide <i>only</i> the User panel, Log panel, and Power Strip View window, and not the Device or the MFV panels.</p> 