

## Specs



Paragon II Main Switching Units	Description	Dimensions	Weight	Power
P2-UMT1664M	16 users x 64 server ports, expansion slot, stacking port, network port	17.32" (W) x 11.41" (D) x 3.5" (H) 440mm (W) x 290mm (D) x 89mm (H)	12.52 lbs 5.68 kg	100V/240V 50/60 Hz 0.6A
P2-UMT832M	8 users x 32 server ports, expansion slot, stacking port, network port	17.32" (W) x 11.41" (D) x 1.75" (H) 440mm (W) x 290mm (D) x 44mm (H)	9.83 lbs 4.46 kg	100V/240V 50/60 Hz 0.6A
P2-UMT442	4 users x 42 server ports, expansion slot, network port	17.32" (W) x 11.41" (D) x 1.75" (H) 440mm (W) x 290mm (D) x 44mm (H)	10.13 lbs 4.59 kg	100V/240V 50/60 Hz 0.6A
P2-UMT242	2 users x 42 server ports, network port	17.32" (W) x 11.41" (D) x 1.75" (H) 440mm (W) x 290mm (D) x 44mm (H)	10.03 lbs 4.54 kg	100V/240V 50/60 Hz 0.6A



Paragon II Stacking Units	Description	Dimensions	Weight	Power
P2-UMT1664S	64 expansion server ports for stacking with P2-UMT1664M	17.32" (W) x 11.41" (D) x 3.5" (H) 290mm (W) x 440mm (D) x 89mm (H)	11.99 lbs 5.44 kg	100V/240V 50/60 Hz 0.6A
P2-UMT832S	32 expansion server ports for stacking with P2-UMT832M unit	17.32" (W) x 11.41" (D) x 1.75" (H) 290mm (W) x 440mm (D) x 44mm (H)	8.99 lbs 4.08 kg	100V/240V 50/60 Hz 0.6A



Paragon II User Station	Description	Dimensions	Weight	Power
P2-UST	Analog access point with PS/2, USB and Sun console	11.4" (W) x 10.1" (D) x 1.75" (H) 290mm (W) x 255mm (D) x 44mm (H)	4.3 lbs 1.9 kg	100V/240V 50/60 Hz 0.6A



Paragon CIMs	Description	Dimensions	Weight	Power
P2CIM-PS2	CIM for PS/2	1.3" (W) x 3.0" (D) x 0.6" (H) 32mm (W) x 77.4mm (D) x 15.6mm (H)	0.20 lb 0.07 kg	n/a
P2CIM-SUN	CIM for SUN	1.3" (W) x 3.0" (D) x 0.6" (H) 32mm (W) x 77.4mm (D) x 15.6mm (H)	0.13 lb 0.06 kg	n/a
P2CIM-USB	CIM for USB	1.3" (W) x 3.0" (D) x 0.6" (H) 32mm (W) x 77.4mm (D) x 15.6mm (H)	0.20 lb 0.07 kg	n/a
P2CIM-SUSB	CIM for SUN USB	1.3" (W) x 3.0" (D) x 0.6" (H) 32mm (W) x 77.4mm (D) x 15.6mm (H)	0.148 lb 0.067 kg	n/a
P2CIM-PS2DUAL	CIM for PS/2 provides 2 separate channel ports	1.42" (W) x 3.39" (D) x 0.65" (H) 36mm (W) x 86mm (D) x 16.5mm (H)	0.177 lb 0.08 kg	n/a



## The Cat5 Enterprise-Class KVM Solution

### Paragon II

Paragon II is a stackable, Cat5 KVM switch that allows IT staff to manage up to 128 ports per switch.

#### UMT242

- 2-user
- Up to 42 ports

#### UMT442

- 4-user
- Up to 42 ports

#### UMT832M

- 8-user
- Up to 32 ports

#### UMT832S

- UMT832M Stacking unit
- Stack an additional 32 ports

#### UMT1664M

- 16-user
- Up to 64 ports

#### UMT1664S

- UMT1664M Stacking unit
- Stack an additional 64 ports

### Proven Paragon Analog Technology with Stacking, Optional Integrated KVM-Over-IP Access and Superior Management Capabilities

Paragon II, the industry's best stackable Cat5 KVM (Keyboard, Video, Mouse) solution, gives IT professionals the power to access and control servers and other network devices anytime, anywhere. With Paragon II, you can stack up to 128 ports per switch and add up to 10,000 ports via multi-dimensional expansion. Paragon II has superior KVM switch technology that dramatically reduces equipment costs and optimizes space utilization. What's more, this generation of Paragon provides the highest levels of manageability, security and superior video quality to simplify the management of business-critical data centers.

### Innovative Modular Architecture

Paragon II distributes KVM switching and control functions across modular, intelligent components:

**Main Switching Unit** - A secure, intelligent, non-blocked control unit that connects users to servers. Its stackable architecture provides the industry's highest port density making it ideal for large data centers with densely packed racks.

**Stacking Unit** - A cost-effective, space-saving expansion unit that allows you to easily add up to 128 non-blocked ports per switch with 90% less cable than cascading. Stacking units are compatible with Paragon II models UMT832M and UMT1664M. These units:

- Reduce the burden of multiple cables between tiers.
- Reduce Total Cost of Ownership (TCO) by more than 30%.
- Save up to one-third of rack space and HVAC resources.

**User Station** - Designed to fit conveniently under the user's monitor, the Paragon II User Station includes an intuitive On-Screen User Interface (OSUI) for easy access to attached servers.

- Connects to USB, Sun® and PS/2®.

**Computer Interface Modules (CIMs)** - Provide 'keep-alive' keyboard/mouse emulation at the server. Just plug a CIM into a server's keyboard, monitor and mouse ports and connect it to Paragon II with a single UTP (Cat5/5e/6) cable. New small and slim Paragon II CIMs provide the added convenience of firmware upgradeability without interrupting the installed configuration.

©2004 Raritan Computer, Inc. Raritan and Paragon are registered trademarks of Raritan Computer, Inc.; CommandCenter, IP-Reach and Paragon Manager are trademarks of Raritan Computer, Inc.; Sun is a registered trademark of Sun Microsystems, Inc.; Microsoft and Windows are registered trademarks of Microsoft Corp.; Novell is a registered trademark of Novell, Inc.; UNIX is a registered trademark of UNIX System Laboratories, Inc.; PS/2, pSeries and RS/6000 are registered trademarks of IBM Corporation, HP9000 is a registered trademark of Hewlett-Packard Development Company, L.P.; SGI is a registered trademark of Silicon Graphics, Inc.

\*To qualify for advanced replacement under the standard warranty, you must register the product at [http://www.raritan.com/standard\\_warranty](http://www.raritan.com/standard_warranty).

## The Industry's Best Cat5 KVM Solution is Even Better

### Performance

**Non-Blocked Access** - Up to 64 users have a clear path to up to 10,000 servers, dramatically increasing productivity with no user blocked from server access.

**Cross-Platform Support** - Seamless access to all operating systems, platforms and connections: Linux, Windows® NT, UNIX®, Novell®, Sun®, IBM® RS/6000® and pSeries™, HP9000®, Alpha, SGI®, ASCII/serial USB or PS/2.

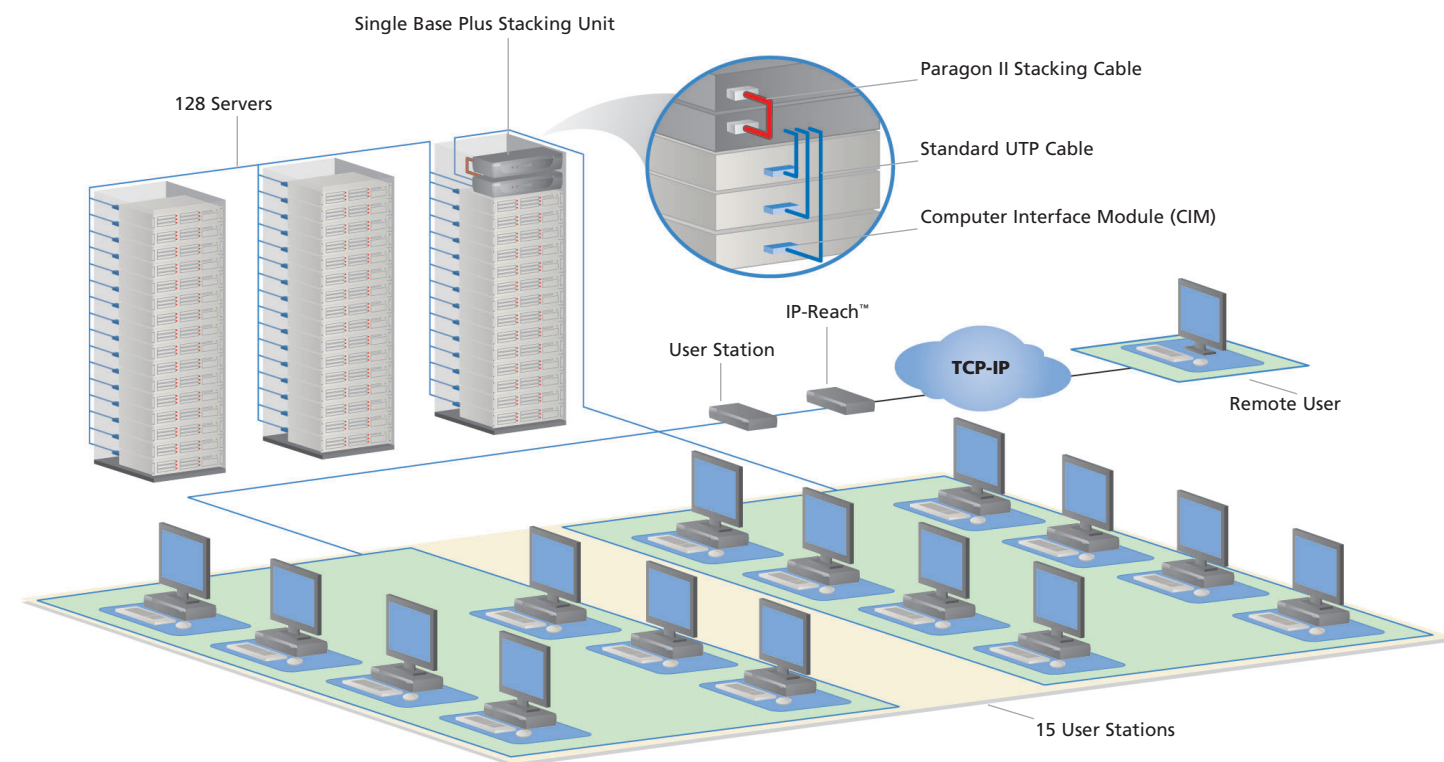
**Higher-Quality Video at Greater Distances** - Paragon II's automatic video tuning delivers the highest possible video quality. Unlike competitive offerings, it offers the capability of fine-tuning a signal for the individual eye.

### Scalable

**Grow as You Expand** - Add, relocate and hot-swap components without disruption as your data center needs change.

**Access From Inside and Outside the Data Center** - Flexibility to access servers from inside and outside the data center and globally over IP.

**Enterprise Solution** - May be deployed individually or integrated with any of Raritan's enterprise-wide data center solutions including CommandCenter™.



## Paragon II - Elegantly Engineered for the Enterprise

### Flexibility

- ▶ Streamlines management capabilities with event logging and audit trails.
- ▶ Distributed architecture lets you physically position servers and users where desired.
- ▶ Includes integrated power management capabilities for remote power recycling.

### Features

- ▶ Continuous server availability via "keep alive" technology.
- ▶ Simple Plug and Play auto-configured installation.
- ▶ Industry's broadest range of port devices.
- ▶ Multi-platform CIMs for PS/2, Sun, USB and serial devices.
- ▶ Flash firmware upgrades.
- ▶ Supports high video resolution - 1600 x 1200.

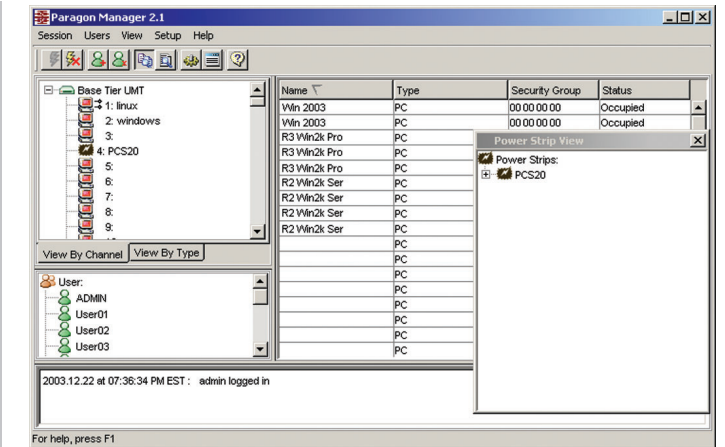
### Applications

**Enterprise-class solution** - Paragon II is a proven, stackable switch, the perfect infrastructure component for all high-density server environments, including:

- ▶ Corporate data centers.
- ▶ Server farms.
- ▶ Co-location facilities.
- ▶ Web-hosting facilities.
- ▶ Hardware and software testing labs.

**When you're ready to take control, do it with Paragon II.**

Call 1.800.724.8090 or visit [raritan.com/paragonII](http://raritan.com/paragonII)



### Paragon Manager™ Software

- ▶ A single, consolidated view of all connected devices.
- ▶ Add, remove or edit users and manage devices.
- ▶ Perform system-wide firmware upgrades.
- ▶ Log and audit all system events.

### Integrated Power Management

- ▶ Power on, power off or recycle power to servers and other attached devices.
- ▶ Define security levels for individual users on a per-outlet basis.
- ▶ Get the status of each connected power unit.