



## Command and Control of Your IT Enterprise

### CommandCenter

Centralize control to global IT equipment via a simple Web interface

### Secure, Centralized IT Infrastructure Management

Managing an IT infrastructure is complex, time consuming, expensive and critical to a company's success. Clearly, for IT managers, the pressure is on. Not only must IT managers be more responsive to changing needs while reducing downtime and increasing security; all this must be accomplished while reducing costs. It's a challenge. At Raritan, we've engineered a solution that helps IT managers meet this challenge by centralizing the control of a company's IT infrastructure. It's called CommandCenter.

Designed to provide complete control of your enterprise IT infrastructure, CommandCenter consolidates the management of Raritan's Dominion™ Series, Paragon® and IP-Reach™ appliances, and all of the servers and other IT devices connected to Raritan equipment. With CommandCenter, a single sign-on to a single interface gives IT administrators a consolidated view, with click-and-control access and BIOS-level control, whether they're at the rack, at their desks, in the Network Operations Center (NOC) or anywhere in the world.

CommandCenter seamlessly integrates KVM (Keyboard, Video and Mouse) and serial console devices to tie all the data center technologies together in a framework that allows you to quickly locate and access devices no matter where they are in the enterprise. In addition, features such as centralized, role-based policy management provide the ability to dramatically:

- Reduce complexity through aggregated access.
- Reduce mean time to repair (MTTR) and downtime through reduced complexity combined with remote BIOS-level access.
- Reduce Total Cost of Ownership (TCO) by streamlining overall operations, administration and maintenance (OA&M).

Ideal for enterprises with one or more data centers or a number of remote offices, CommandCenter provides:

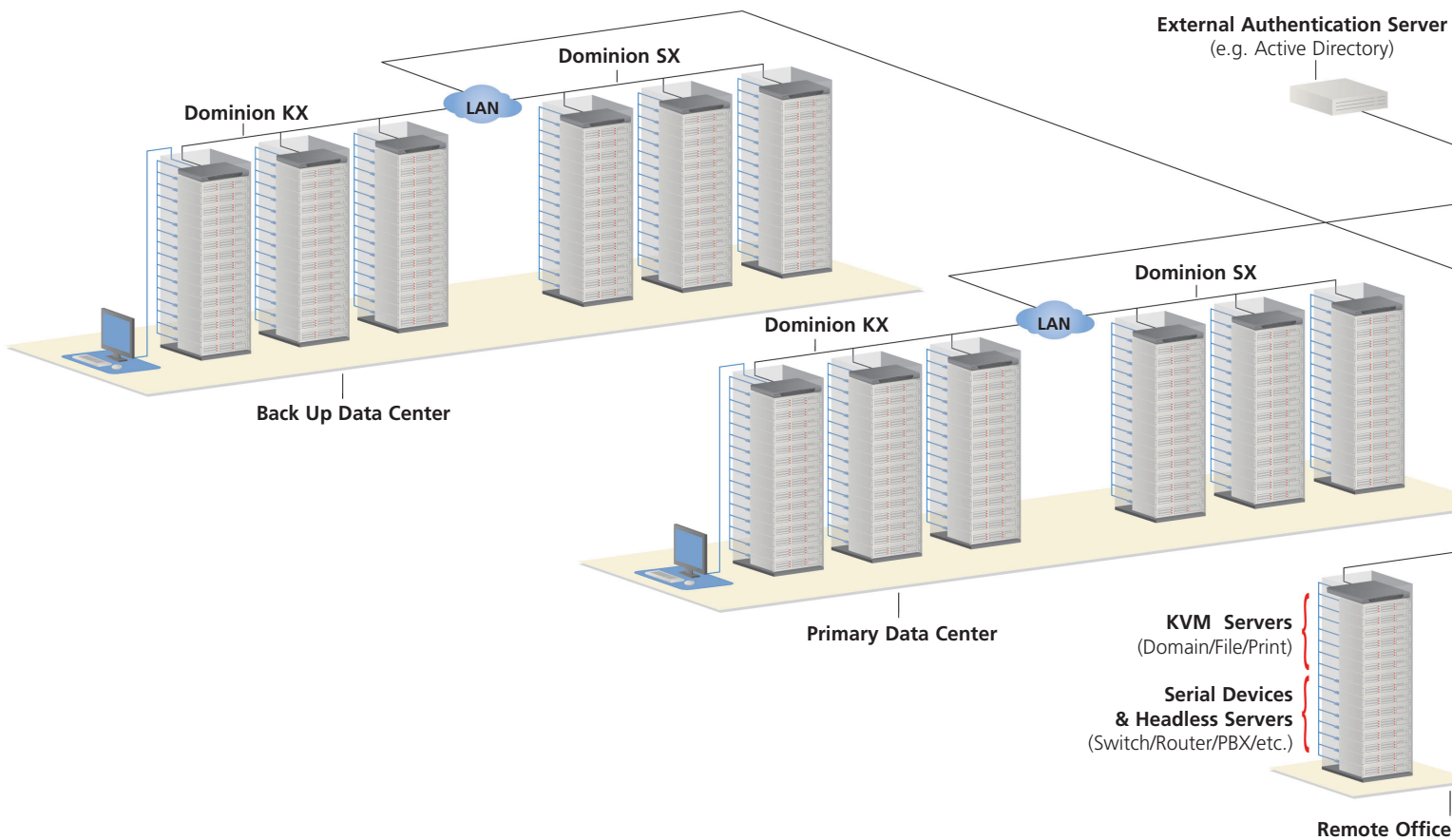
- Intuitive dashboard views allowing access and control of all data center equipment via a single unified GUI interface providing both physical and logical views of all IT assets.
- The ability to monitor, diagnose and resolve infrastructure problems, from anywhere, at anytime.
- Secure, centralized management of multiple data centers, branch offices and remote locations via one, secure, appliance.

# A New Dimension in IT Management.

## CommandCenter Highlights

➤ Easy to use - Appliance architecture with an intuitive browser-based interface for simplified access to IT equipment via Raritan Dominion Series, Paragon, and IP-Reach. User-defined physical and logical views to locate devices quickly.

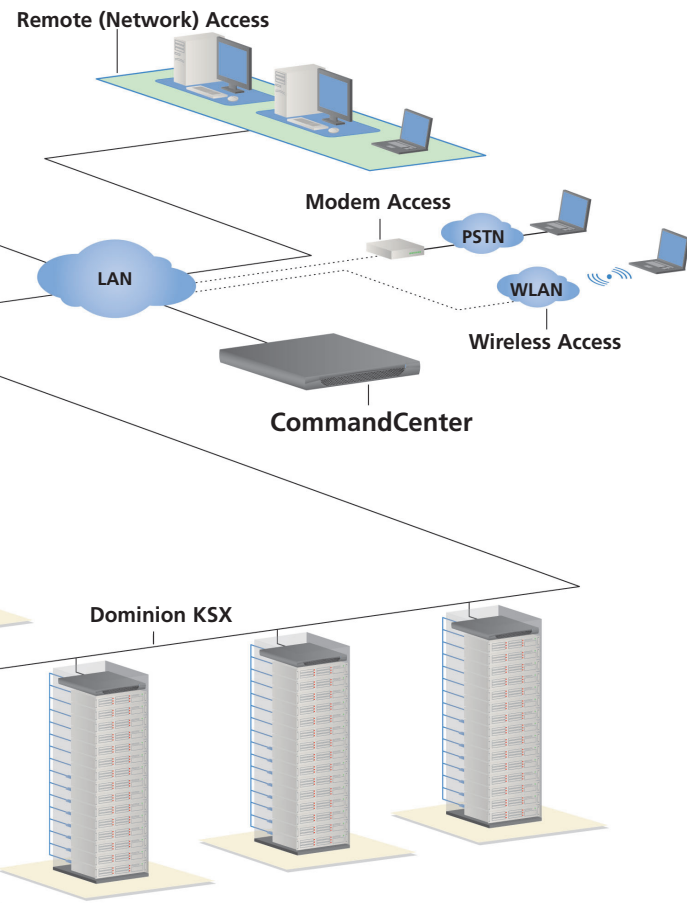
- Scalability - Multi-user access to several Dominion, Paragon and IP-Reach appliances, and hundreds of servers and serially controlled devices.
- High Availability - Redundant (mirrored) hard drives, dual network interface cards (NICs), dual hot-swappable power supplies with separate supply cables, and emergency access via built-in modem.
- Secure - 100% encryption of all data on the network.



# Secure Centralized Command.

## Centralized IT Management

- Single IP-address reduces the complexity of managing multiple Raritan Dominion Series, Paragon and IP-Reach appliances, including firmware upgrades and user access permissions.
- Consolidates KVM and serial console servers, power strips and remote office / branch office equipment into one view.
- Choice of Web browser or SSH access over Internet, Intranet or VPN providing secure remote access to all connected devices.



## Complete Security

CommandCenter includes powerful security features that enable integration with existing external authentication tools including Active Directory®, LDAP-S, RADIUS and TACACS+. In addition, an on-board authentication server provides failover in the event of an external server or network problem.

- Robust security policies for individual user authorization to the port level.
- 128-bit SSL private and public key encryption.
- IP-based Access Control Lists (ACL) and IP filtering grants or restricts user access.
- Flexible session time-outs and password expirations.
- "Strong" user name and password authentication.
- Appliance architecture running on embedded Linux® operating system.
- Role-based policy administration capability.

## Hardware Features

- 1U height suitable for rack mounting.
- Dual hot-swappable power supplies with separate power cables.
- Dual network interface cards for Ethernet failover.
- Dual mirrored hard drives for high availability.
- LED activity/status indicators.
- Local admin port for at-the-rack administration and maintenance
- Integrated modem for emergency access to CommandCenter

## Software Features

- Plug-and-Play Appliance - no server or client software installation required.
- All features, including, access, configuration and administration, accessible via a Web browser.
- Powerful, portal-like interface provides customizable, permission-based groupings and device views.
- Raritan appliance discovery, with device availability status, health updates and alarms.
- Flexible user access licensing model.
- Syslog integration

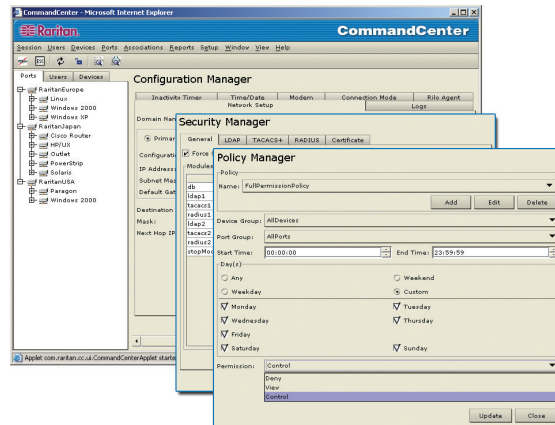
## Specs



### CommandCenter

Form Factor	1U
Dimensions	22.1"(D) x 17.32" (W) x 1.75" (H) 563mm (D) x 440mm (W) x 44mm (H)
Power	Redundant, hot-swappable power supplies auto sensing 110/220 V - 2.0A
KVM Admin Port	1
Serial Admin Port	1
<b>Hardware</b>	
Processor	Intel® Pentium® III 1 GHz
RAM	512 MB Error Checking and Correcting (ECC) memory
Ethernet Interfaces	Two 10/100 Ethernet network interface controllers
Hard Disk & Controller	ATA RAID-1 card with 2-40 GB ATA drives
CD-ROM drive	Slot-load 40x read-only
Console	DB-9 RS232 console port
<b>Remote Connection</b>	
Network	10/100 Ethernet (RJ45)
Modem	V.92 (56Kbps) ; RJ-11 connector
Protocols	TCP/IP, UDP, RADIUS, SNMP, SNT, SSH, HTTP, HTTPS
<b>Warranty</b>	Two years with Advanced Replacement*. Guardian Extended Warranty Also Available.

## One View of the Entire Enterprise



## Access and Control at Anytime from Anywhere

- ▶ Intuitive Graphical User Interface (GUI) providing user-defined physical and logical views of ports, users, and devices.
- ▶ Integration of Raritan's Dominion Series, Paragon and IP-Reach appliances.
- ▶ Active Directory, LDAP-S, RADIUS, TACACS+ and internal authentication.
- ▶ Array of flexible logging and reporting options with audit trails for diagnostics and troubleshooting
- ▶ Real-time view and manage active user sessions and active ports

**When you're ready to take control, do it with CommandCenter.**

Call 1.800.724.8090 or visit [raritan.com/cc](http://raritan.com/cc)

Raritan Computer, Inc. is a leading supplier of IT infrastructure management solutions for secure access, monitoring and management of servers and other IT devices in data centers and remote offices. Raritan was founded in 1985, and since then has been making products that are used to control millions of servers at more than 50,000 network data centers, computer test labs and multi-workstation environments around the world. From the small business to the enterprise, Raritan's complete line of compatible and scalable KVM and remote connectivity products offers IT professionals the most reliable, flexible and secure in-band and out-of-band solutions to manage data center equipment, while improving operational productivity. More information on the company is available at [raritan.com](http://raritan.com).

©2004 Raritan Computer, Inc. Raritan and Paragon are registered trademarks of Raritan Computer, Inc.; Dominion, IP-Reach and CommandCenter are trademarks of Raritan Computer, Inc.; Active Directory and Windows are registered trademarks of Microsoft Corp.; Linux is a registered trademark of Linus Torvalds.

\*To qualify for advanced replacement under the standard warranty, you must register the product at [http://raritan.com/standard\\_warranty](http://raritan.com/standard_warranty).