



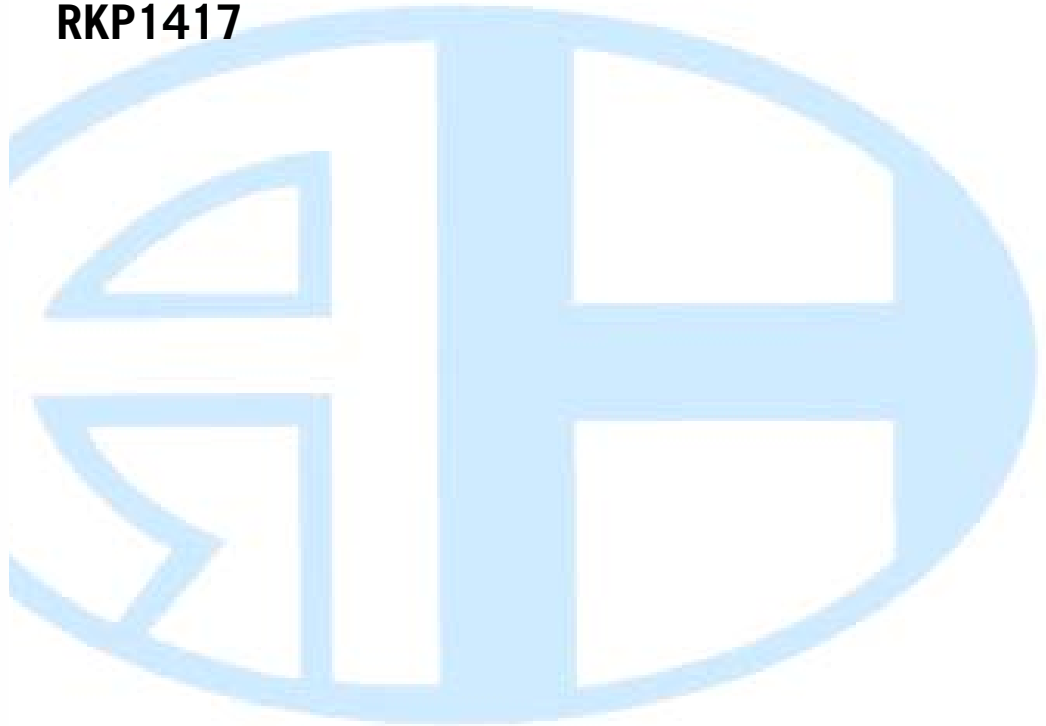
CyberView User Manual

RKP1015

RKP1415

RKP1017

RKP1417



1U Rackmount LCD monitor Keyboard drawer

Version 1.0

20 March 2004

Table of Contents

1.0	General.....	3
1.1	Unit Introduction.....	3
1.2	Unit Photograph.....	3
1.3	Unit Features.....	3
1.4	Unit Packing Contents.....	3
1.5	Important Information & Safeguards.....	3
1.6	Preparation for Use.....	4
2.	LCD On Screen Display.....	5
2.1	Display & Navigation Using Membrane Keys.....	5
2.2	Customizing the LCD Settings.....	6
3.	Miscellaneous Sub Menu.....	7
4.	Setting OS Refresh Rate - Microsoft Windows®.....	9
5.	LCD Technical Specification.....	10
6.	LCD Troubleshooting.....	12
6.1	The LCD does not function, the PC input is operational.....	12
6.2	The message 'Check Cable' appears on the LCD.....	12
6.3	The message 'No Sync' appears on the LCD.....	12
6.4	The message 'Signal out of Range' appears on the LCD.....	12
7.	Warranty.....	13
7.1	Period & Conditions.....	13
7.2	Manufacturers exclusions.....	13
8.	Disclaimer.....	13

1.0 General

1.1 Unit Introduction

Thank you for purchasing the 1U Rackmount LCD monitor Keyboard drawer. The unit offers space saving leading edge, flexible, features.

1.2 Unit Photograph



1.3 Unit Features

- 15 or 17 inch TFT/LC active matrix color
- Built in OSD (On Screen Display) controlled by integral membrane keys
- Single external 12V 5A remote power adaptor, easy to replace and ensures only a single power source is required to the unit , reducing the capacity of UPS outputs required

1.4 Unit Packing Contents

Model Number	115	117
RKP1015 / 1017 / 1415 / 1417 1U LCD Keyboard Drawer	1	1
User Manual CD	1	1
Quick Reference Guide	1	1
AC to DC Power Adaptor	1	1
Rack Mount Kit	1	1

1.5 Important Information & Safeguards

- Please read these safety instructions carefully
- Keep this user manual for later reference
- Disconnect the unit from the mains input power supply source before cleaning
- Do not spray aerosol or liquid cleaners directly on the unit, use only a soft cloth for cleaning
- Clean the LCD only with a soft anti static cloth
- Avoid placing pressure on the LCD to prevent permanent damage
- Rest the unit on a reliable surface when installing, a drop or fall may cause injury
- Please note all cautions and warnings on the equipment
- Never open the unit. Only qualified personnel should open the unit

- Refer to section [5.0](#) of this user manual regarding recommended storage and operating conditions for the unit
- Refer to sections [6.0](#) of this user manual regarding troubleshooting of the unit
- Refer to section [7.0](#) of this user manual regarding improper use of the unit

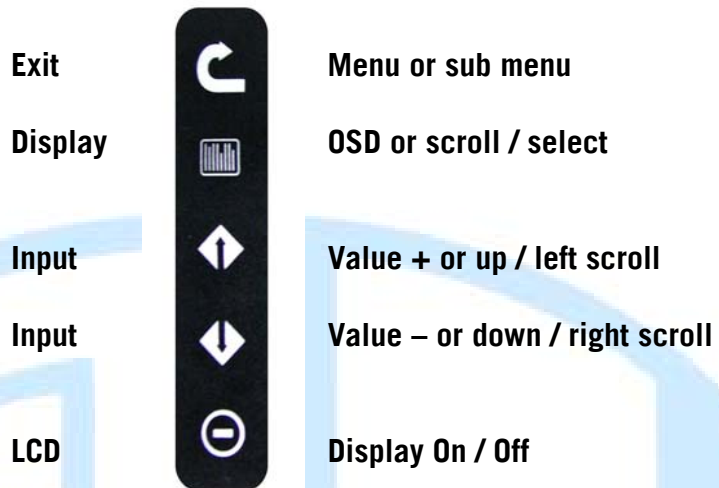
1.6 Preparation for Use

- Carefully remove the unit from its packaging
- Please check that the unit and its accessories match the packing contents in section [1.4](#) of this user manual
- Please read this user manual thoroughly familiarising yourself with the unit
- Place the unit on a protected work surface and carefully slide open the keyboard drawer noting the friction stops on the slides to prevent movement of the keyboard whilst in use
- Carefully slide open and lift the LCD screen to a convenient viewing angle
- Plug up the DC power supply, whilst noting that the green LED on the external adaptor should now be lit
- You should now be able to see the LED lights on the unit functioning you could also follow section [2.0](#) to familiarise yourself with the OSD (On screen display) of the unit
- After removing the DC power input, carefully install the unit into the rack, noting section [1.5](#) of this user manual - important information and safe guards, and plug in all connecting hardware (ensure all connecting hardware is powered down for this stage of the install)
- Further information regarding the use of this unit can be found in the following sections of this user manual

2. LCD On Screen Display

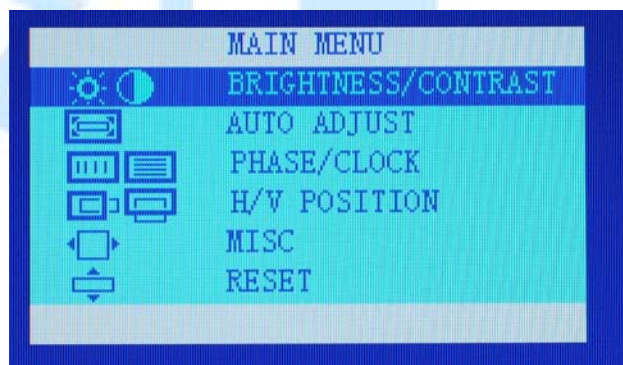
2.1 Display & Navigation Using Membrane Keys

The On screen display built into the unit provides users with an efficient method of adjusting to the display input signal. This section explains clearly how to navigate the OSD using the membrane keys, shown below, that you will find on the unit to the right side of the LCD screen.



2.1.1 To display the OSD

Simply press the key marked



2.1.2 To Select a Menu Item

Simply press the key to scroll



2.1.3 To Enter the Sub Menu

Simply press the key marked



2.1.4 To Change an Input Value

Simply use the key marked



2.1.5 To Save the setting

Simply press the key marked



2.1.6 To Exit the Main Menu

Simply use the key marked



2.2 Customizing the LCD Settings

2.2.1 Brightness / Contrast

To adjust brightness - follow steps [2.1.1](#) through 2.1.5



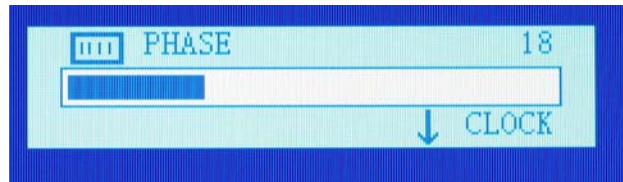
2.2.2 Auto Adjust

To auto adjust - follow steps [2.1.1](#) through 2.1.5

NOTE -: While the OSD Menu is NOT displayed the  key acts as Auto Adjust

2.2.3 Phase / Clock

To optimize display qualities - follow the steps [2.1.1](#) through 2.1.5



2.2.4 Horizontal Screen Position

To adjust horizontal screen position - follow the steps [2.1.1](#) through 2.1.5



2.2.5 Vertical Screen Position

To adjust horizontal screen position - follow the steps [2.1.1](#) through 2.1.5

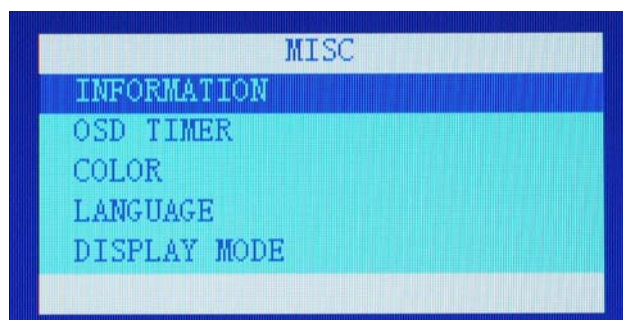


2.2.6 To reset to default factory setting

To reset - follow the steps [2.1.1](#) through 2.1.5

3. Miscellaneous Sub Menu

To select miscellaneous sub menu - follow the steps [2.1.1](#) through 2.1.5



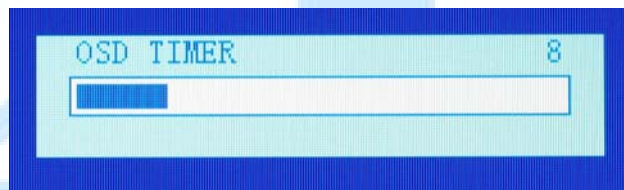
3.1.1 Information

To select information sub menu - follow the steps [2.1.1](#) through 2.1.5



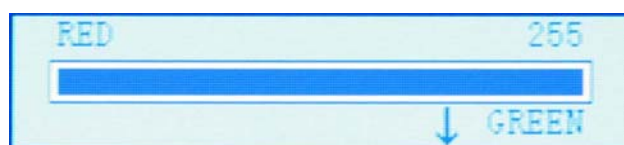
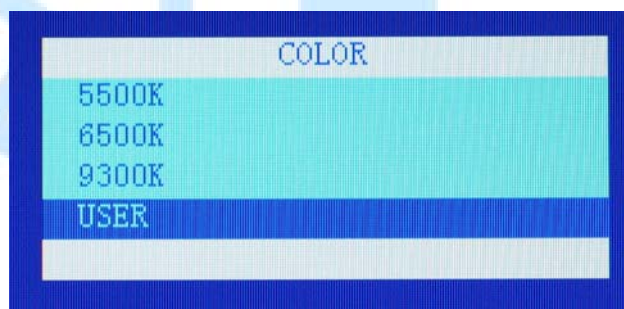
3.1.2 OSD Timeout

To select OSD Timeout sub menu - follow the steps [2.1.1](#) through 2.1.5



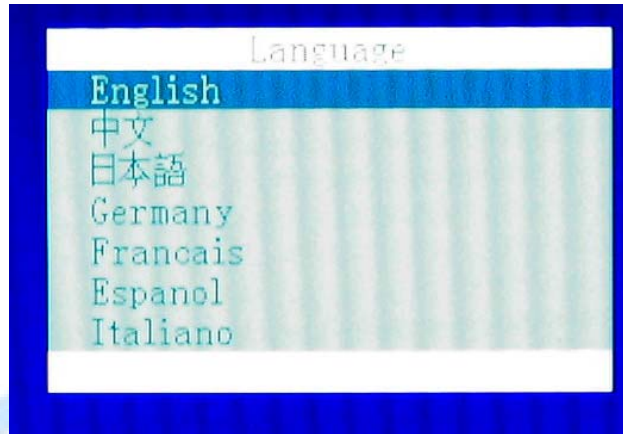
3.1.3 Color

To select Color sub menu - follow the steps [2.1.1](#) through 2.1.5



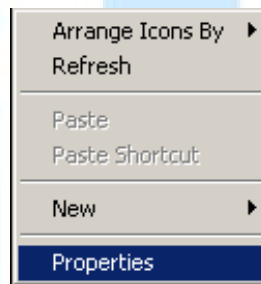
3.1.4 OSD language

To select the OSD language sub menu - follow the steps [2.1.1](#) through 2.1.5

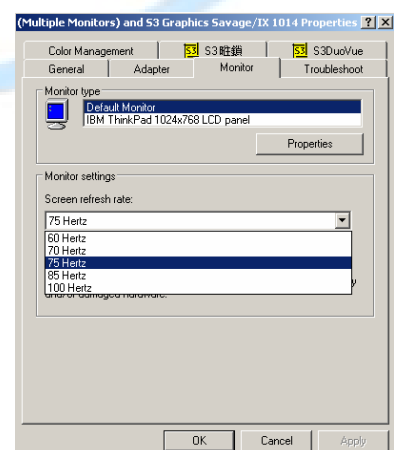
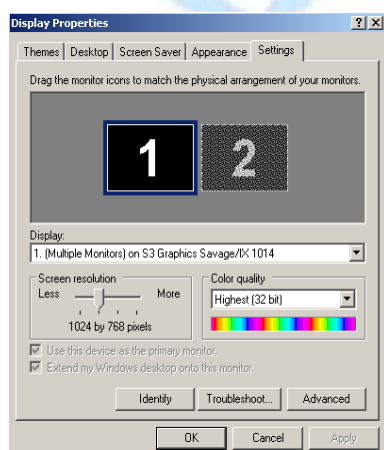


4. Setting OS Refresh Rate - Microsoft Windows®

On the windows desktop 'right click' the mouse key and then select 'properties'



Select 'Settings' from the tab menu



Select 'Monitor' and then select a Screen refresh Rate of 75 Hertz – Press OK to save and exit

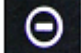
5. LCD Technical Specification

LCD	Size	15"
	Screen Area	TFT Active Matrix
	Display Area	304.1mm (h) x 228.1mm (V)
	Contrast Ratio	300:1
	Viewing Angle	130 deg (H) z 115 deg (V) TYP
	Resolution	1024 x 768 XGA
	Pixel Pitch	0.297mm (H) x 0.297mm (W)
	Response Time	Tr = 5ms, TF = 20ms TYP
	Brightness	250 cd / m ²
	Panel Color	16.2M Colors
	Back Light	4 Lamps
Video	Synchronization	Horizontal 48.36-60 KHz
	Range	Vertical 56-75 Hz
	Input Signal	Analog RGB 0.7Vp-p
Power Management		VESA DPMS
	Power	Micro on/off switch
	OSD Control	Brightness, Contrast, Color, H Position, V Position, Auto Config, OSD Adjust, Dither, etc
	Power Input	12V/5A DC Adaptor
	Video Input	15-Pin D-sub connector

LCD	Size	17"
	Screen Area	TFT Active Matrix
	Display Area	337.92mm (h) x 270.336mm (V)
	Contrast Ratio	350:1
	Viewing Angle	150 deg (H) z 125 deg (V) TYP
	Resolution	1280 x 1024 SXGA
	Pixel Pitch	0.264mm (H) x 0.264mm (W)
	Response Time	Tr = 5ms, TF = 20ms TYP
	Brightness	250 cd/m ²
	Panel Color	16.7M Colors
	Back Light	4 Lamps
Video	Synchronization	Horizontal 31-69 KHz
	Range	Vertical 56-75 Hz
	Input Signal	Analog RGB 0.7Vp-p
Power Management		VESA DPMS
	Power	Micro on/off switch
	OSD Control	Brightness, Contrast, Color, H Position, V Position, Auto Config, OSD Adjust, Dither, etc
	Power Input	12V/5A DC Adaptor
	Video Input	15-Pin D-sub connector

6. LCD Troubleshooting

6.1 The LCD does not function, the PC input is operational

- Ensure that the Power adaptor is securely plugged in at both ends and has power feed from the supply source; check that the Green led light is on on the adaptor unit
- Ensure the LCD is on by pressing the key 
- Ensure that the LCD is pulled out past the micro switch threshold

6.2 The message 'Check Cable' appears on the LCD

- The VGA cable input cable is not connected properly

6.3 The message 'No Sync' appears on the LCD

- The message indicates that there is no input signals from the PC, make sure the PC is functioning and that the graphics card is installed correctly.

6.4 The message 'Signal out of Range' appears on the LCD

- This message indicates that the input signal is beyond the LCD capability – The maximum resolution for the screen is 1024 x 768 at 75 Hz Check PC and Operating System output refer to step [4.0](#)

7. Warranty

7.1 Period & Conditions

Warranty is from the date of sale of the unit, subject to the terms and conditions of the Austin Hughes Europe Authorised channel partner who supplied the unit, please refer to your authorised channel partner for terms & conditions

7.2 Manufacturers exclusions

7.2.1 Any Unit on which the Austin Hughes serial number has been defaced, modified or removed

7.2.2 Damage, deterioration, or malfunction resulting from – accident, misuse, neglect, fire, water, lightening, or other acts of nature

7.2.3 Unauthorised unit modification

7.2.4 Unauthorised unit repair, by other than an Austin Hughes Europe authorised channel partner

7.2.5 Damage to the unit caused by installation or removal, unless covered by Austin Hughes Europe channel partner services warranty

7.2.6 Use of unauthorised parts not meeting Austin Hughes Europe specifications

7.2.7 Other causes of damage unrelated to product defect including wear and tear

7.2.8 Damage to the unit caused by transit

8. Disclaimer

This information is subject to change without notice. Austin Hughes Europe accept no responsibility for damage or claims, resulting from misuse or misinterpretation of this information